

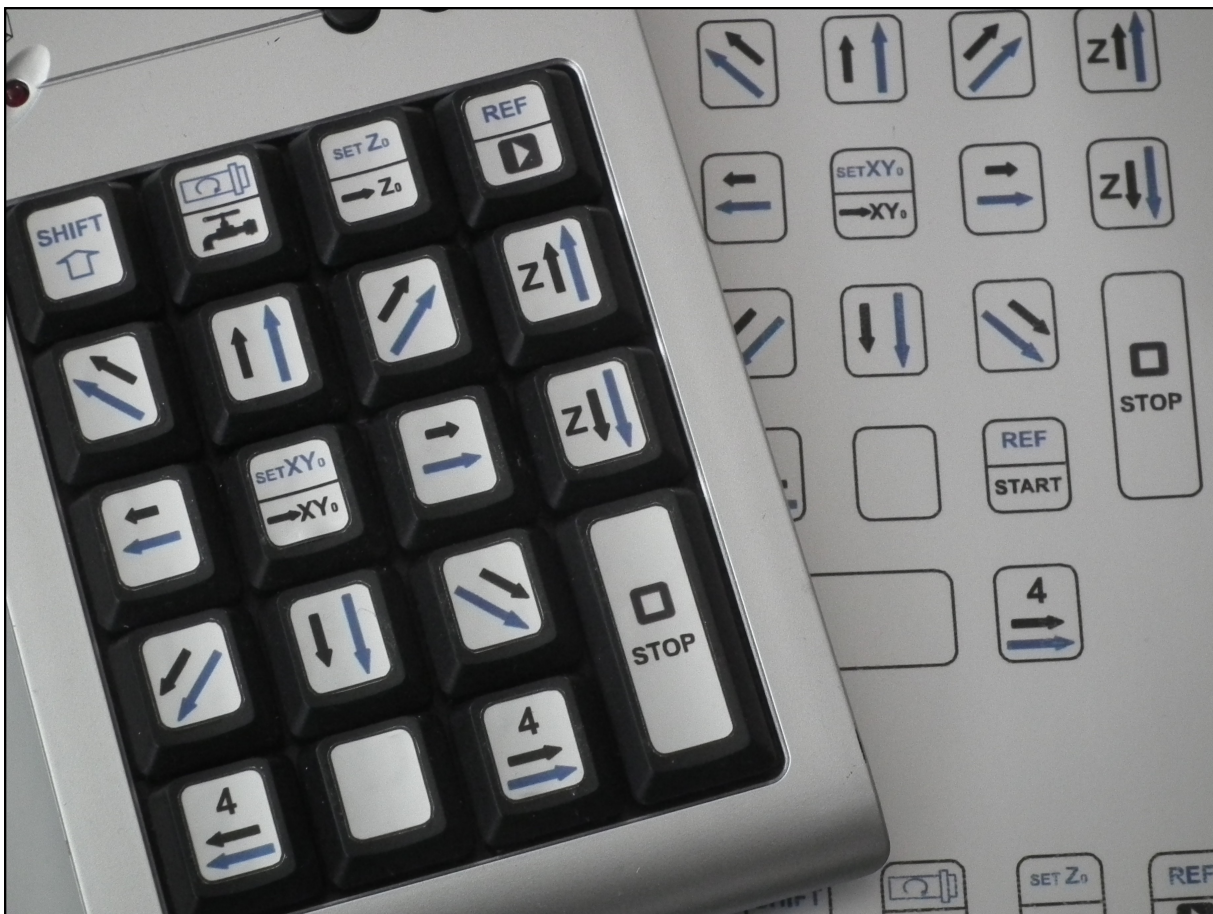
# How to....

# ...with *WinPC-NC* ?

## Use of a numeric keypad as a remote control

X	Starter
X	Light
X	USB
X	Professional

This how to guide will teach you how to set up and use a USB numeric keypad as a remote control for your machine.



### **Required materials:**

1. A wired or wireless USB numeric keypad with 18 or 19 keys
  2. **WinPC-NC** version 3.00/30 or higher
  3. A free USB port
  4. Key stickers
- 

### **Step 1: Print out of the key stickers and attach them to the keypad**

Free key stickers can be found in the download area of our homepage [www.lewetz.de/en](http://www.lewetz.de/en). Don't like ours? Feel free to make your own! If you're willing to share your creations, we'll post them to our download area so others can use them.

The arrangement of the key stickers is critical for proper operation of your machine. Be careful to apply them accordingly.



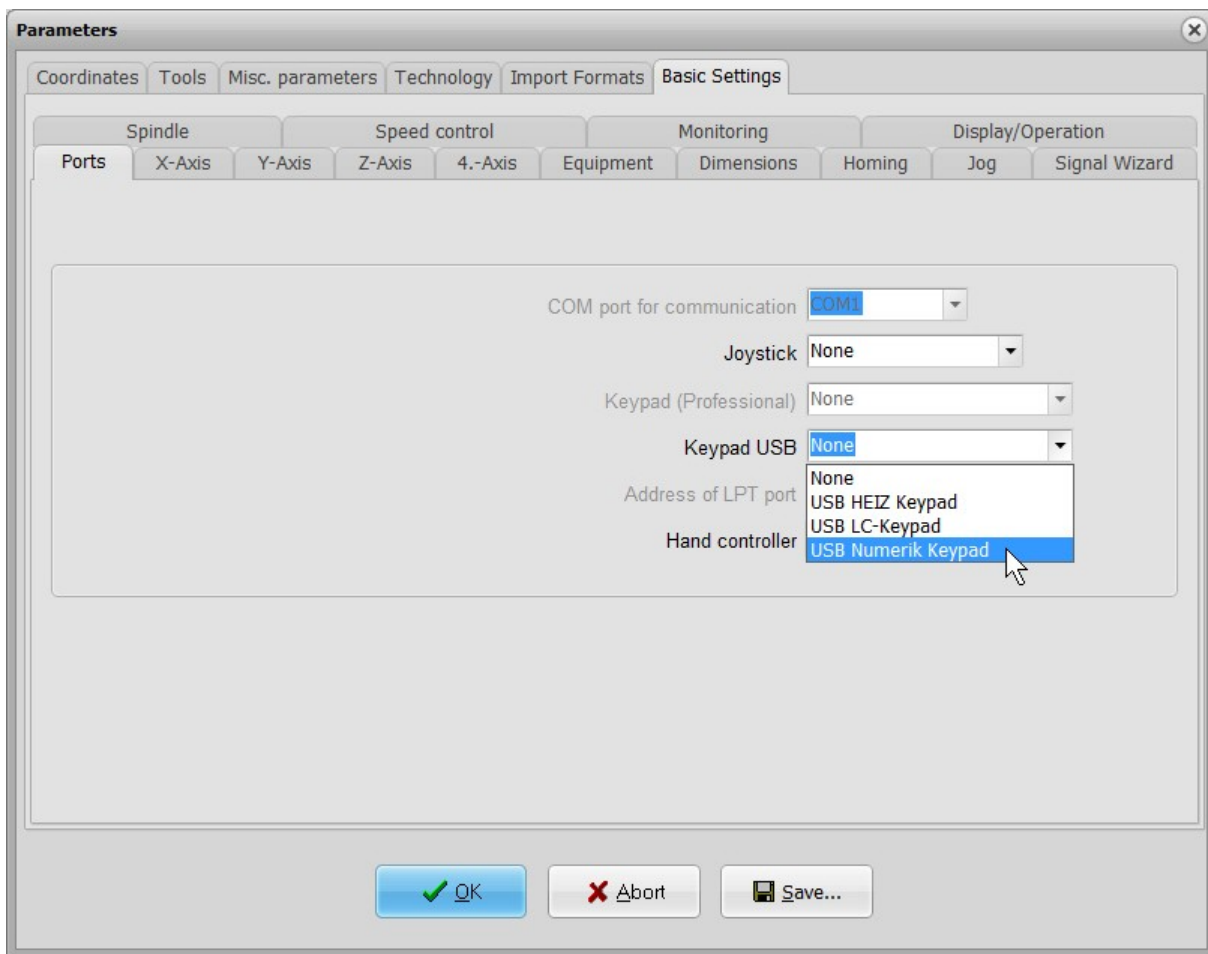
## **Step 2: Connect the USB keypad**

If the keypad is connected to your machine for the first time, Windows will automatically install its drivers. Wait for a message to appear telling you that the keypad is ready for use before attempting to use it.

Test the keypad by starting an editor or word processor and typing on the keys.

## **Step 3: Enable the keypad in WinPC-NC**

Open **WinPC-NC** and navigate to the **Basic Settings-Ports** dialog. Select the USB Numeric Keypad tab.



**Step 4: Using the keypad with WinPC-NC**

The USB keypad **SHIFT** key (the uppermost key on the left side) function as a modifier for the other keys. When the **SHIFT** key is held down and another key is depressed, the action denoted in blue is performed. Otherwise, the action denoted in black is performed.

A long key press will result in continuous motion; a momentary key press will result in a single step. Holding down the **SHIFT** key high speed motion will occur; without the **SHIFT** key, slow speed motion will occur.

The USB keypad movements parallel those found in the Jog window; key presses replace mouse clicks.

