

Hard- und Software Burkhard Lewetz

Technical Software Engineering

How does it work...

...with *WinPC-NC* ?

Update of an existing installation to latest version

- ✓ Light
- ✓ USB
- ✓ NET
- ✓ Professional

In this Quick Start Guide you will learn how to stay up to date with your *WinPC-NC* installation or how to load a new version from time to time as required.

Table of Contents

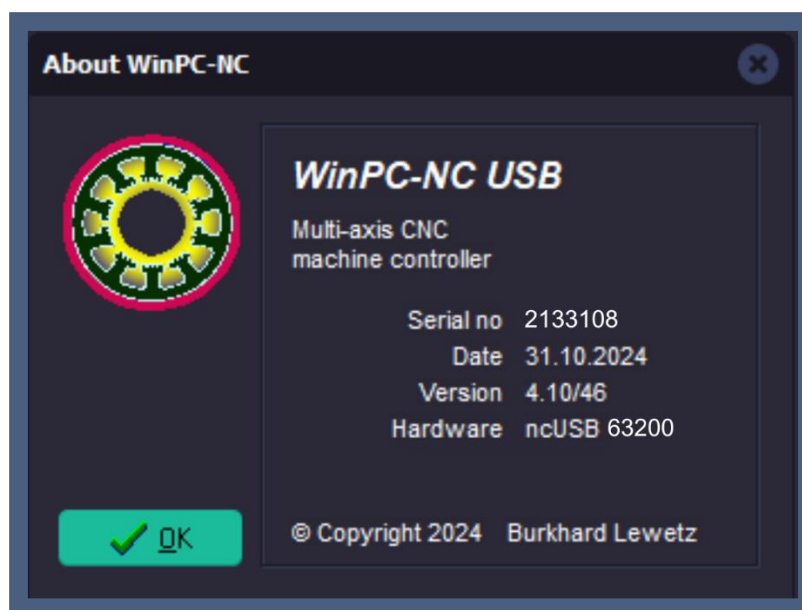
Possible scenarios	2
Step 1: Download of correct update.....	3
Step 2: Unpacking and copying of new files	4



Possible scenarios

WinPC-NC is constantly developed by our staff, new functions are added and, of course, bugs and minor inadequacies are fixed. Each new version is clearly marked with version and revision number and then e.g. with 4.10/46 it is called version 4.10 with revision level 46.

The currently installed version can be displayed at any time under the **Help** menu with the entry **About WinPC-NC....** In addition to the current version and revision level, you can also see the date of release.



In order to give all users the opportunity to independently keep their installation up to date, we make the updates available on our homepage at **www.Lewetz.de** in the public download area.



Update to current program versions

This ZIP files include the current **WinPC-NC** program files as well the updater program. It can be run at systems where **WinPC-NC** is already installed and running. It does not substitute a complete and full installation. Please follow the README file for detailed steps. If you want to update your **WinPC-NC Light** licence please contact us by mail.

The here placed updates are only usable with a pre installed and runnable version. They did not replace a full installation.

Version 4.1 is not compatible with Windows XP.

Aktuelle Versionen / Current versions

	Version 4.1	Version 3.0	Version 2.5
WINPCNC.EXE	4.10/51	3.41/32	2.50/42
Datum/Date	10.03.2025	08.03.2023	14.03.2019

Version 4.1	Version 3	Version 2.5
	<i>WinPC-NC Starter</i>	<i>WinPC-NC Starter</i>
		<i>WinPC-NC Economy</i>
<i>WinPC-NC USB</i>	<i>WinPC-NC USB</i>	<i>WinPC-NC USB</i>
<i>WinPC-NC NET</i>		
<i>WinPC-NC Professional</i>	<i>WinPC-NC Professional</i>	<i>WinPC-NC Professional</i>

Link to download page: <http://www.lewetz.de/en/service/download>



Step 1: Download of correct update

You can download the update that matches your installation here and save it on your computer for further use.



Please note :

These updates are only valid and can be run within the installed major version.

Example:

old version 2.10/xx	to current version 2.50/42
old version 3.00/07	to current version 3.41/32
old version 4.00/xx	to current version 4.10/51

It is not possible to update to the next major version.

Example:

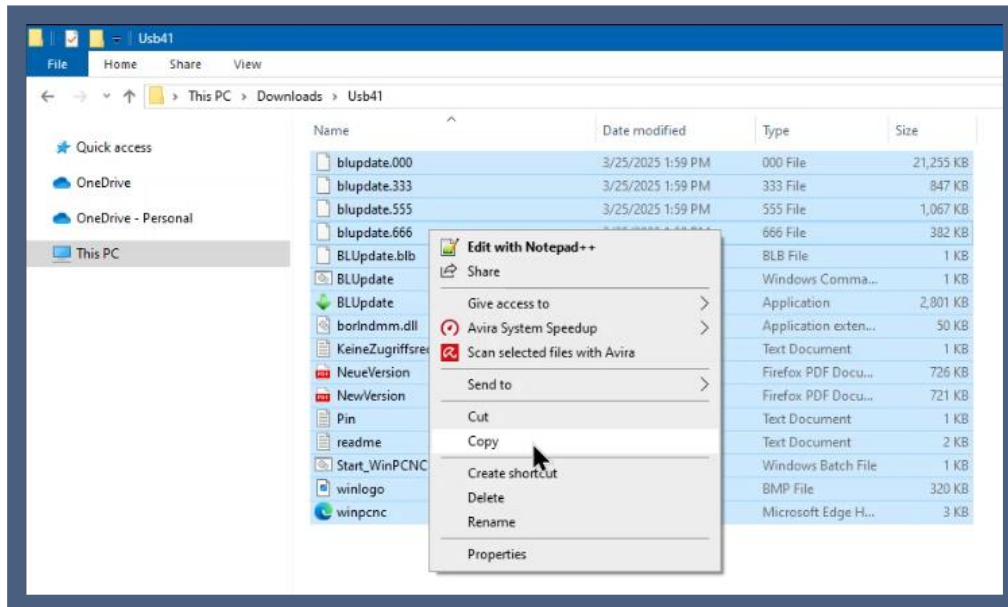
old version 2.50/42	to current version 4.10/51
---------------------	----------------------------

is not possible for free, please mail to us

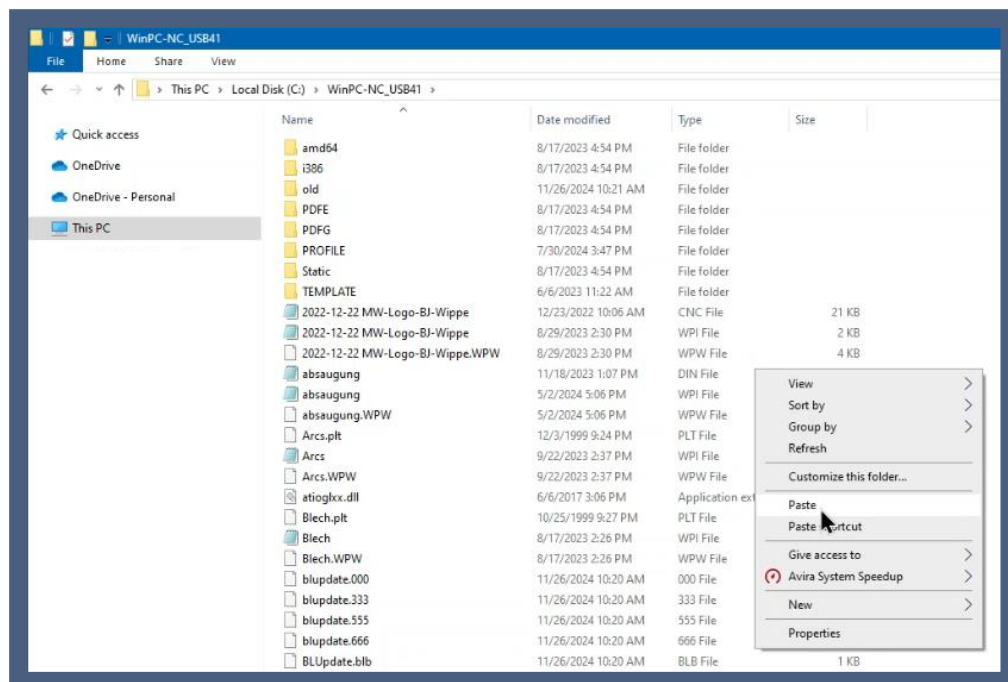


Step 2: Unpacking and copying of new files

Open the loaded and saved ZIP file, select all files and copy them to the clipboard.



Then navigate to the directory of your *WinPC-NC* installation e.g. to **C:\WinPCNC_USB** and paste all files from the clipboard there. This is done most simply with a mouse right click and then **Paste...**

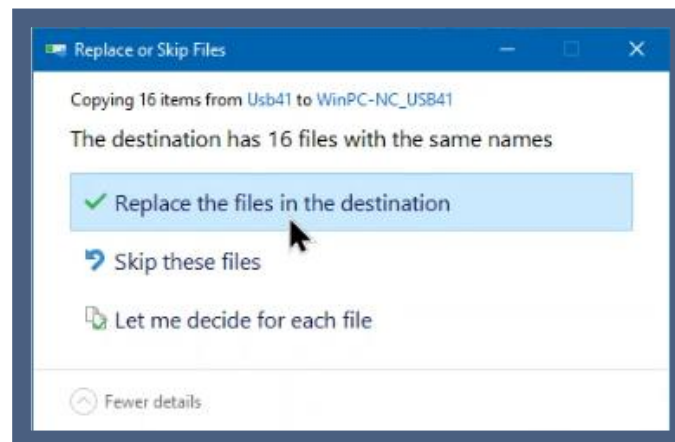


How does it work with *WinPC-NC* ?

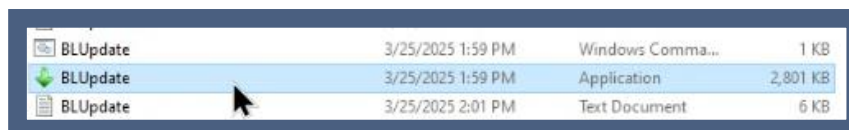


Update of an existing installation to the latest version

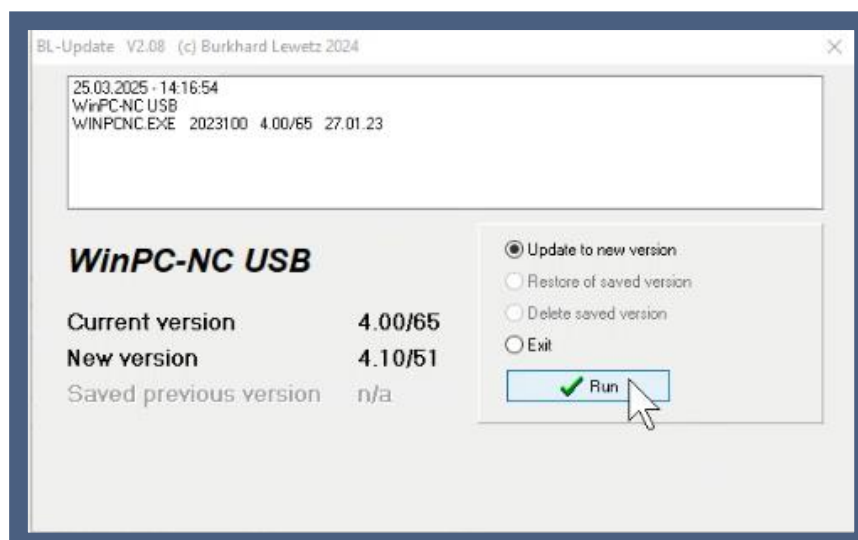
All new files from the update archive must then be found in the **WinPC-NC** directory. If files are overwritten, you can confirm the security prompts for this without any problems.



Then execute the file **BLUpdate.exe** with a double click of the mouse.



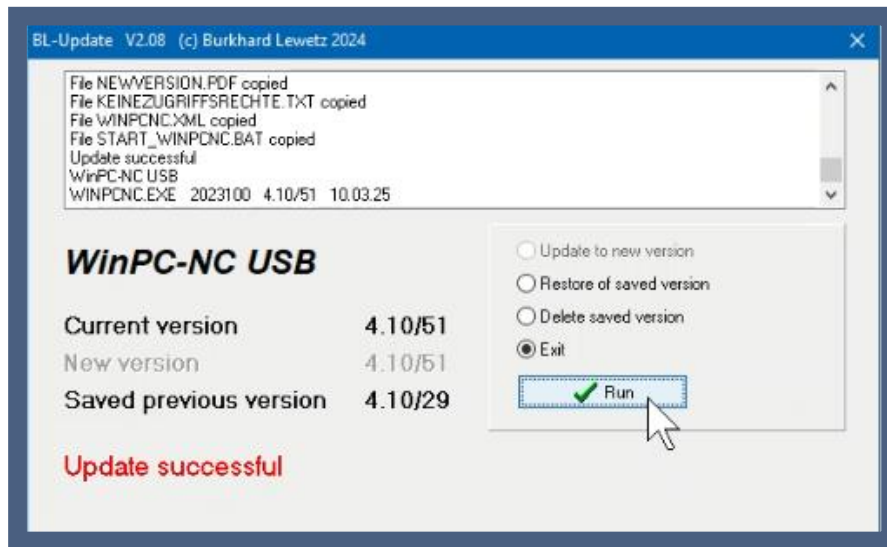
The updater then opens automatically.



Three versions of **WinPC-NC** are displayed in the Updater: the version currently in use, the latest available version and the saved version. To load the latest version, select the option "Update to new version" and then click on "Run".



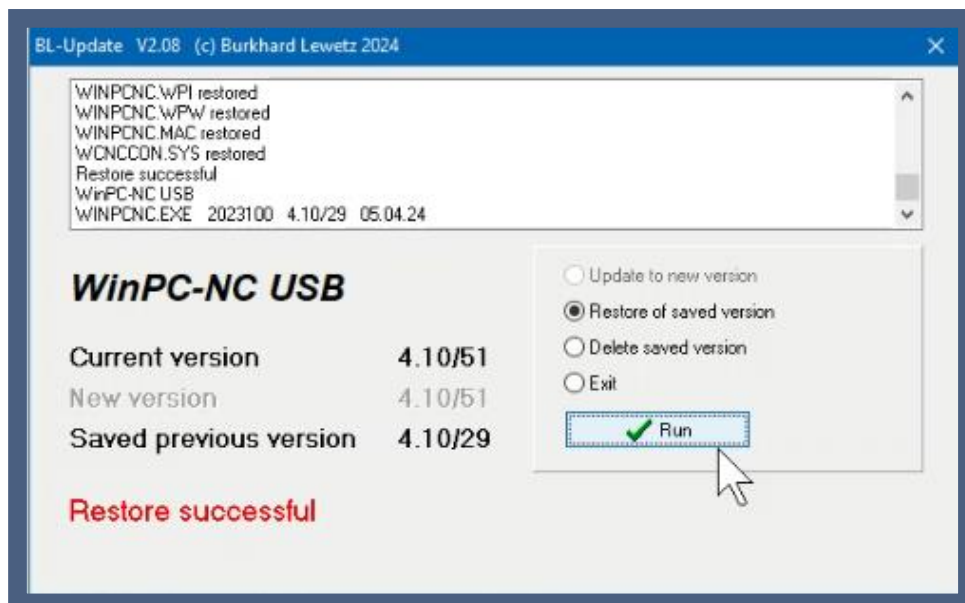
The update is then carried out automatically and the new files are copied.



The previous version is automatically saved. The next time **BLUpdate.exe** is started, it is displayed as a saved version and can be restored if required.

The new version remains saved locally on the computer and can be reloaded at any time.

To restore the previous, backed-up version, select the “Restore of saved version” option and then click “Run”. This will load the previous version.



The update to the new version, which is saved locally on the computer, can be redone at any time.



Update of an existing installation to the latest version

All changes, enhancements and bugfixes are described in the HISTORY.PDF file.



Hint:

This update process only loads the new program files and replaces the old ones.

No settings or parameters are changed and also the license and license file remain unchanged.
