



WinPC-NC...?

...How does it work?

Applying presets of an earlier version or installation

| | |
|---|--------------|
| X | Starter |
| X | Light |
| X | USB |
| X | Professional |

These brief instructions describe how to transfer parameters and settings of an earlier version or installation to the current.

Scenarios:

1. You intend to use a new version of **WinPC-NC** for operating your machine.
2. You intend to install **WinPC-NC** on a different computer by applying all presets.
3. You intend to use an update or upgrade of a higher version.

Basically it is always possible to install two versions or instances of **WinPC-NC** in parallel. All you need to do is to assign different directory names.

There are various methods how to proceed. Basically it depends on the original version and the individual functions, e. g. how to back up and archive files.



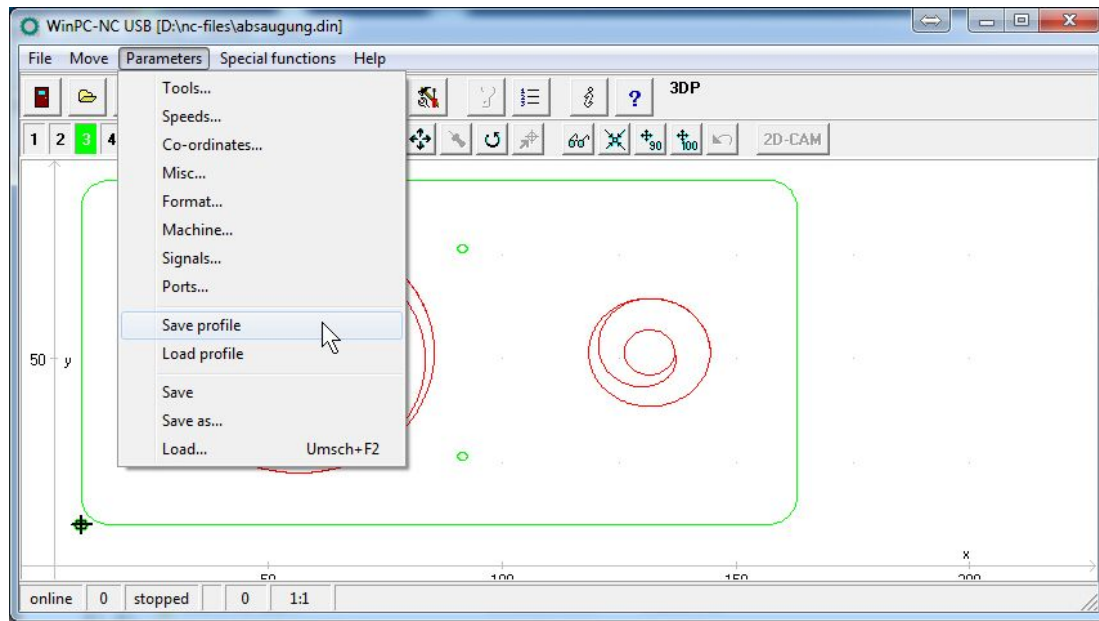
WinPC-NC ... How does it work?

Applying presets of an earlier version or installation

Option 1: Load and save profiles

Starting with version 2.5 **WinPC-NC** provides a special profile management for saving all settings. This means an easy transmission of all configurations for use in the future.

Open the parameter menu and click to “**Save profile**”...



When using **WinPC-NC Light**, **WinPC-NC Economy** and **WinPC-NC USB** the system generates a profile file and the proposed file name includes the current date and time as well as the extension *.WMS. Of course, you can define a more significant name.

Profiles in **WinPC-NC Professional** are indicated with the extension *.WPMS. Please note that reloading these profiles do require other versions of **WinPC-NC Professional**.



Please note:

Profile files of **WinPC-NC Light**, **WinPC-NC Economy** and **WinPC-NC USB** have the same basis and thus they are compatible with each other. During upgrades they can easily be replaced.

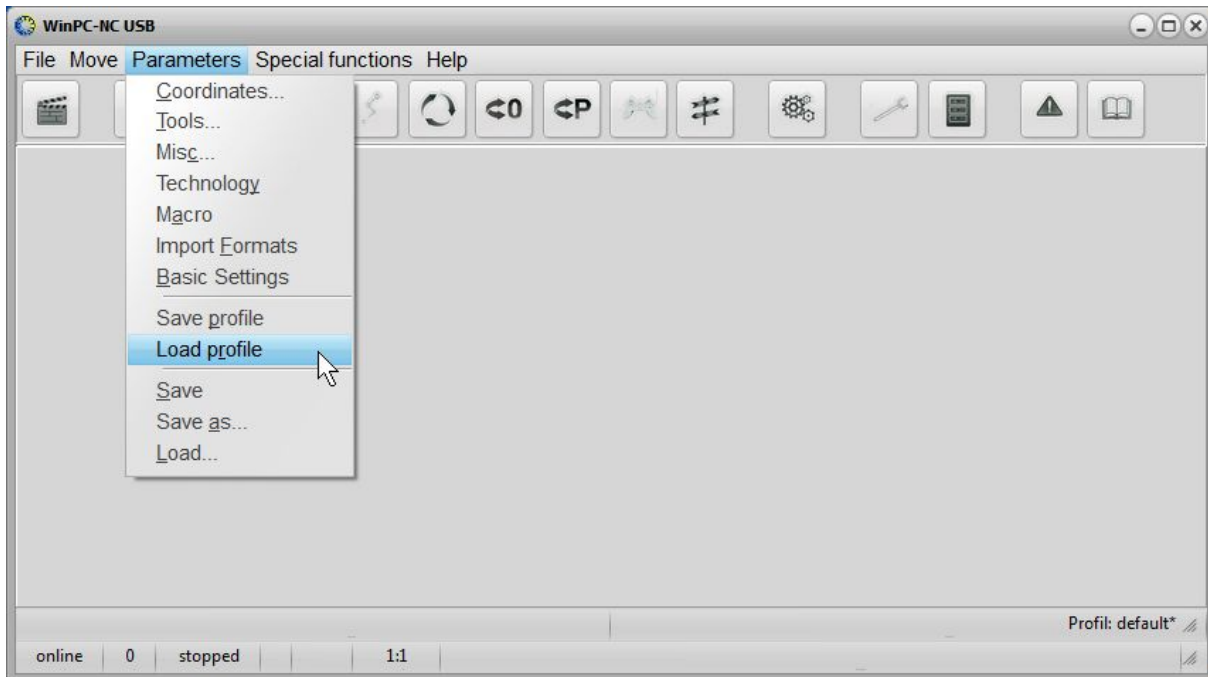
Reloading profile files in **WinPC-NC Professional** do require other versions of **WinPC-NC Professional**.



WinPC-NC ... How does it work?

Applying presets of an earlier version or installation

Start the new version of **WinPC-NC**. Click to “**Load profile**” in the parameter menu. A dialog box opens and the new generated profile file *.WMS is displayed. Click “**Ok**”.



After correct loading of all settings you can use the new version of **WinPC-NC** as done previously. All settings, tool data, macros and key assignments are correctly transferred.

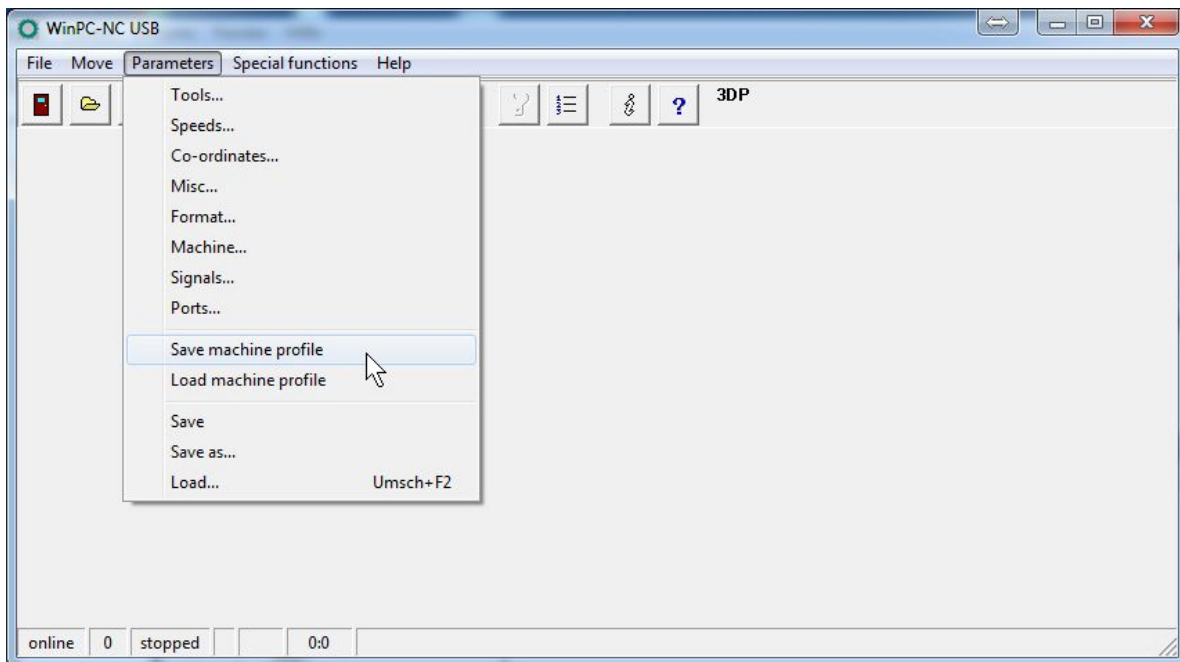


WinPC-NC ... How does it work?

Applying presets of an earlier version or installation

Option 2: Save and load machine setup

In version 2.0 and 2.1 the profile management has been described as **machine setup** and the terms of menus are different. However, the process remains the same as it applies to the profile transmission. A **machine setup**, previously saved in an earlier version, can now be loaded as a profile in the new version.



Option 3: Save and copy parameter files

With all other versions of **WinPC-NC Light**, **WinPC-NC Economy** and **WinPC-NC USB** individual parameter files can be easily copied by using the Windows clipboard. This applies to earlier versions in particular.

Thereby open the device manager or computer via the Windows explorer and browse to the installation directory of your earlier version of **WinPC-NC**.

If necessary, please modify the display properties for displaying any familiar extensions and system files.



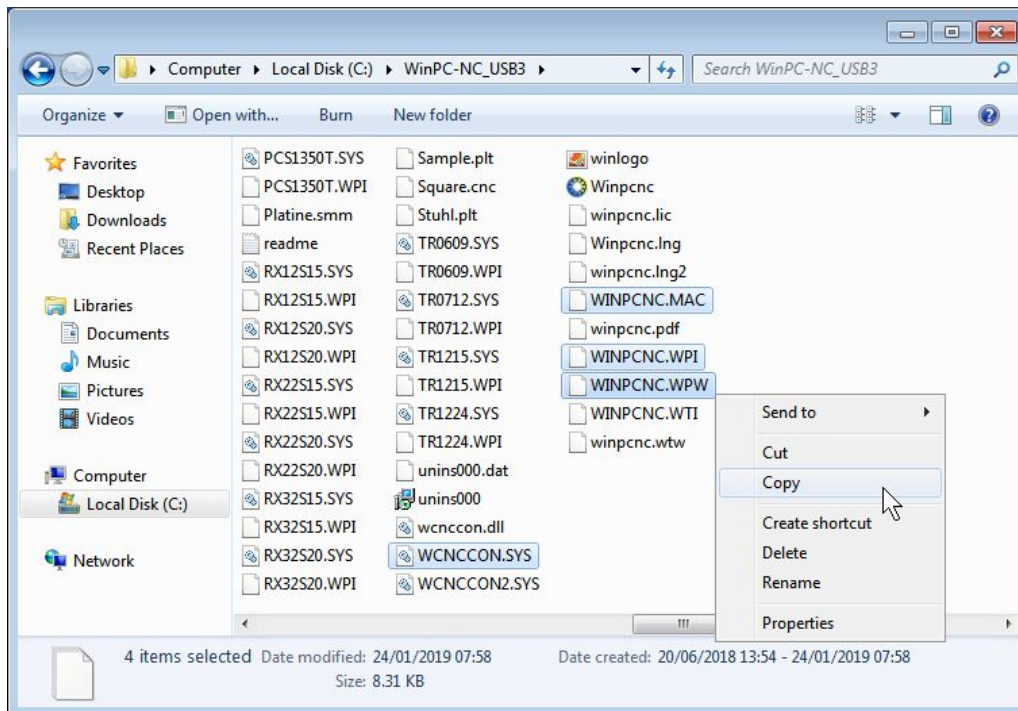
WinPC-NC ... How does it work?

Applying presets of an earlier version or installation

Mark the following files by mouse and pressed Strg-key:

| | |
|--------------------|--------------------------------|
| WCNCCON.SYS | Settings for machine mechanics |
| WINPCNC.WPI | Settings of WinPC-NC |
| WINPCNC.WPW | Tool parameters |
| WINPCNC.MAC | Defined macros |

Copy these files into the clipboard or on a suitable data medium.



Now change to the new directory and copy these saved files. Hereby you overwrite the existing files with the same term including any presets.

101-002 // 24.01.2019 // NLW