

Hard- and Software Burkhard Lewetz

Technical software engineering

How does it work...

...with *WinPC-NC* ?

**Initial installation of *WinPC-NC*
on your computer**

- ✓ Light
- ✓ USB
- ✓ NET
- ✓ Professional

These instruction will guide you through the first time installation of *WinPC-NC*
on a Windows based PC



Table of contents

1. Requirements	3
2. Installation media	4
2.1 Installation media CD	4
2.2 Installation media License card	5
2.3 Installation media download link as e-mail	7
3. Installation	9
4. License file	19
5. Connecting the hardware	21
6. Starting <i>WinPC-NC</i>	22



1. Requirements

Before starting, please check that the following requirements are met in order to complete the installation successfully.

- Installation medium with the *WinPC-NC* software (CD, license card or download link as e-mail)
- PC with the following minimum requirements:
 - Windows 11, Windows 10, Windows 8, Windows 8.1 operating system, Windows 7 (32- or 64-bit system)
 - CPU clock frequency greater than 2 Ghz
 - a free USB 2.0/3.0 interface
 - at least 150 MB free hard disk space
 - at least 1GB free RAM memory
 - Computer mouse or touch input
 - Monitor with at least 1280x1024 pixel resolution
- Associated hardware with suitable cable
 - The following hardware is possible:
 - **ncUSB** module
 - **ncNET** module
 - **nc100** adapter
 - **sc100b** adapter
 - **sc100c** adapter
 - **WinPC-NC Professional** controller, e.g. **CNCCON S**, **CNCCON W**, **CNCMAX**



Note:

DO NOT connect the hardware and the cable to the PC before installing the PC software.



2. Installation media

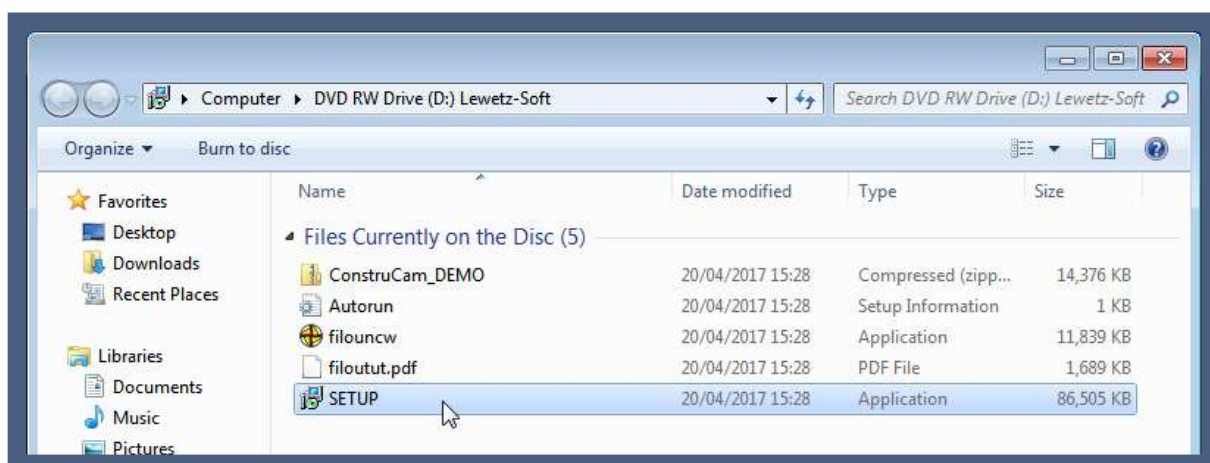
2.1 Installation media CD

Insert the installation CD with the *WinPC-NC* software into your CD/DVD drive and wait a moment until the AutoPlay starts.

As soon as the following window appears, click on Run setup.exe.



If you have deactivated the automatic playback, open your CD/DVD drive with the file explorer and start the file SETUP.EXE with a double click.



If you have received your software on CD but do not have a CD drive, follow the steps in chapter "2.2 Installation media License card".

The remaining installation steps are described in chapter 3.



2.2 Installation media License card



Scan the QR code on the license card with a smartphone or enter the link below in your browser.

Alternatively, you can reach the page at <https://lewetz.net/red/lizenzv4e>



Note:

Please note that the license card is printed in two languages and therefore the links and QR codes are available in the respective language.

How does it work with *WinPC-NC* ?



Initial installation of *WinPC-NC* on your computer

The QR code or link will take you to a form on our website:

Name

E-Mail

7-digit WinPC-NC Serial number (S/N)

5-digit Hardware number (H/N)

Your machine manufacturer for predefined parameter settings:

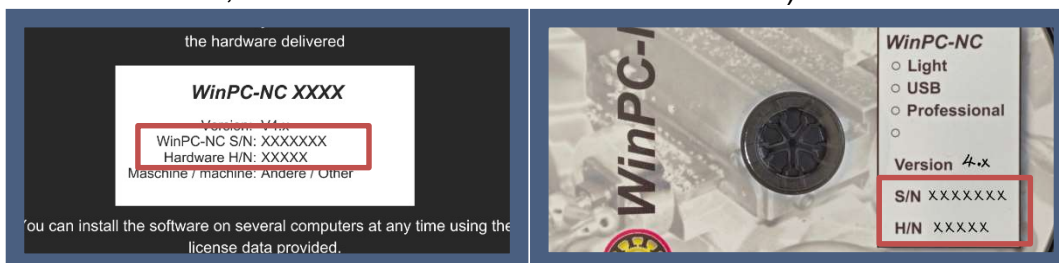
Agreement for data usage

You agree that your information will be used to process your request. Further information and revocation instructions can be found in the [privacy policy](#).

I accept the conditions above: ☐

Please fill out the form as follows:

- Name (optional): Enter your name if you would like to register your license in our system.
- E-mail address: Enter a valid email address to receive the download link and your license file.
- Software and hardware number: To generate your license, you must enter the 7-digit software number and the 5-digit hardware number. You will find these on your license card in the white field under "**WinPC-NC S/N**" and "**Hardware H/N**". (For software on CD, the numbers are also noted on the CD).



- Machine manufacturer (optional): The machine manufacturer is optional, but can be helpful. We have numerous preconfigured parameters that make it easier to set up your software. Select a corresponding machine manufacturer if you would like to use these parameters.

Read the "Agreement for data usage" and accept it by ticking the box. Then click on the Send button.

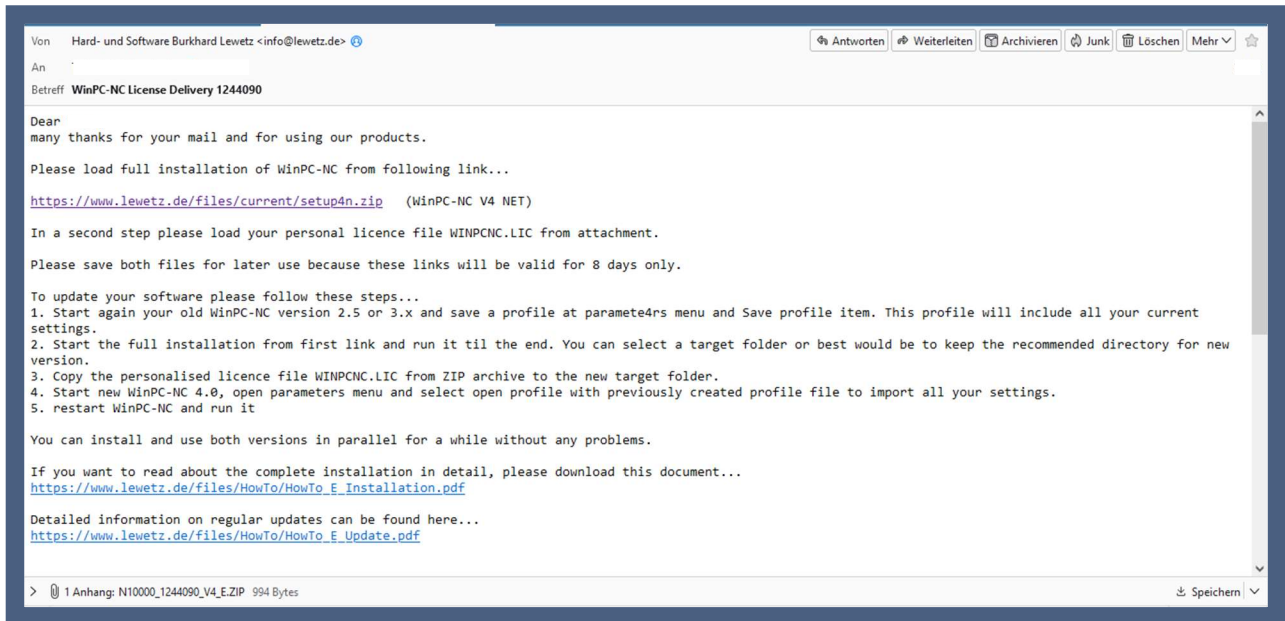
In the next few minutes you will receive an e-mail from us with a download link and your license file.

After receiving the e-mail, follow the instructions in section "2.3 Installation media download link as e-mail"



2.3 Installation media download link as e-mail

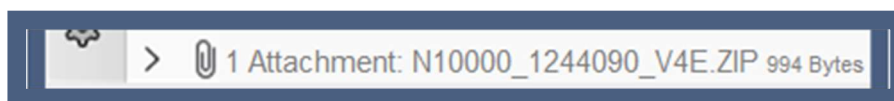
You will receive an e-mail with the download link to the *WinPC-NC* installation file and your license data if you have used the form on our homepage or if you have ordered *WinPC-NC* in our online webshop.



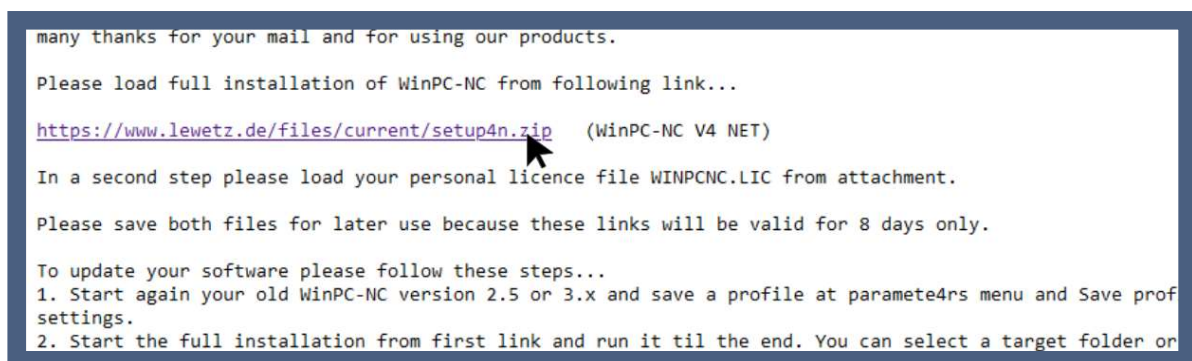
In the e-mail you will find all the information you need to install *WinPC-NC*.

Please read this e-mail carefully!

Attached to the e-mail you will find your personalized license file, which you will need to activate the software after installation. Please save the license file on your computer. (In the case of a CD installation, the license file is already included after the installation).



Now click on the link to download the installation file.

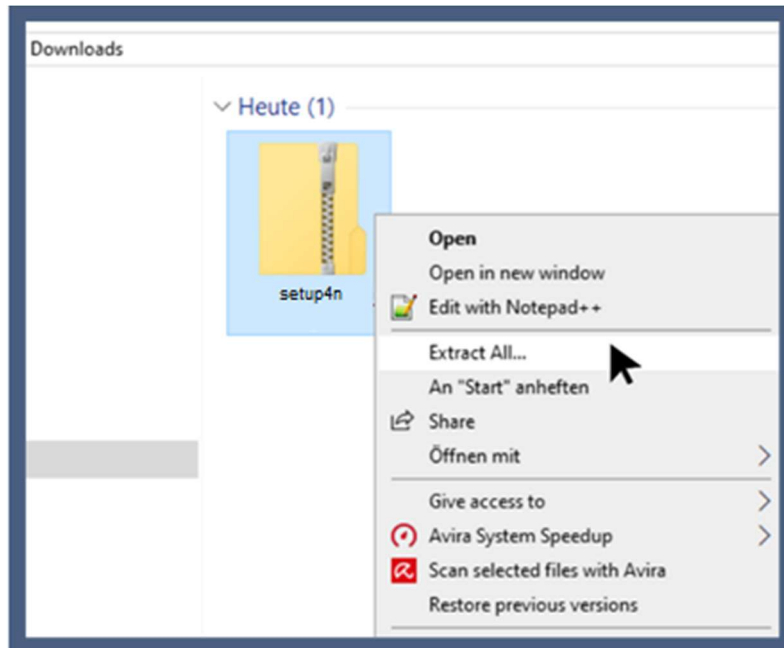


How does it work with *WinPC-NC* ?

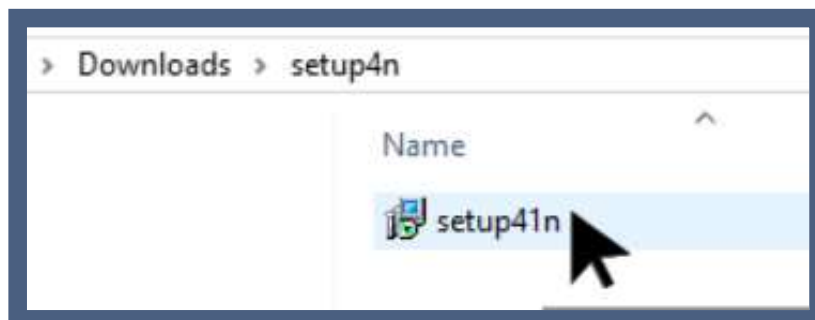


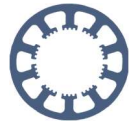
Initial installation of **WinPC-NC** on your computer

After the download, extract the ZIP file of the setup folder.



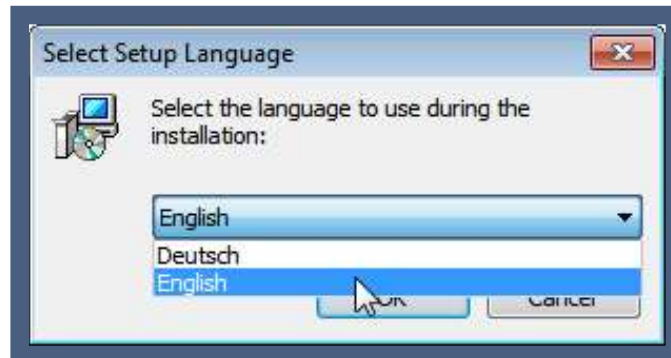
You can then start the installation by double-clicking on the setup file.





3. Installation

First, please select a language and confirm your input by clicking on OK.



Now the automatic installation wizard opens in the selected language and supports you during the installation. To do this, follow the instructions of the wizard exactly.

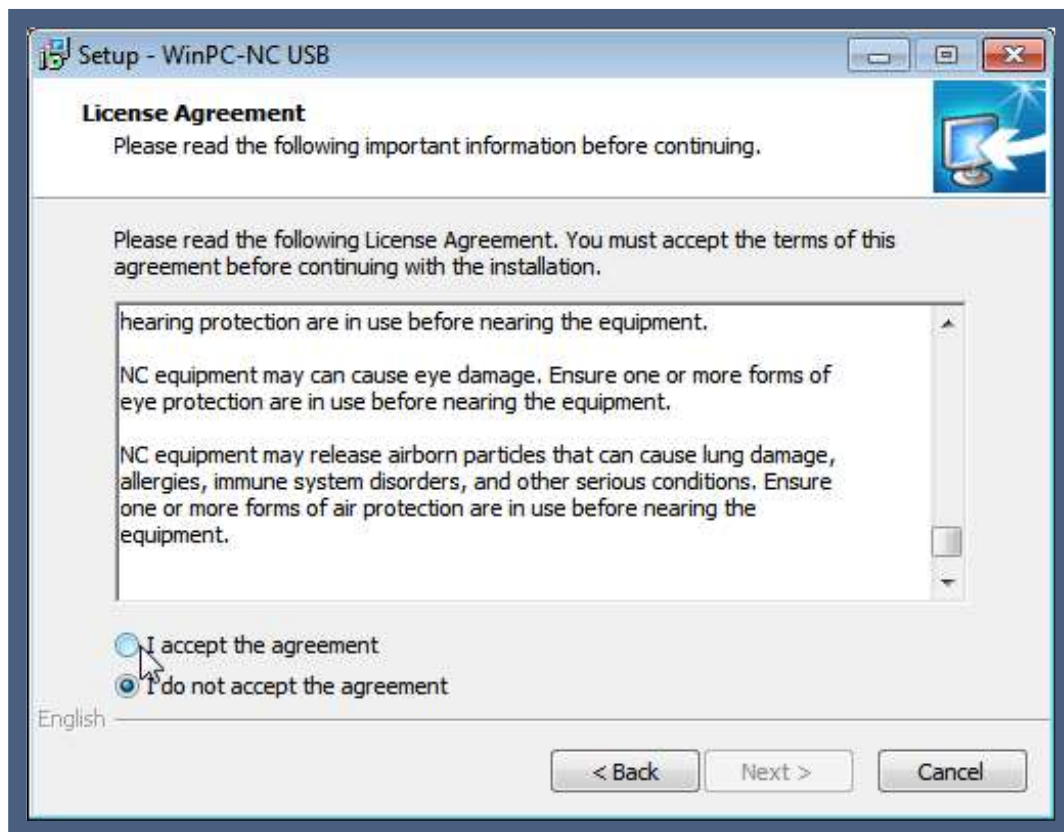


Now click Next > to continue or Cancel to not install the software. In the following dialog you will be asked to read and accept the license terms.

How does it work with *WinPC-NC* ?

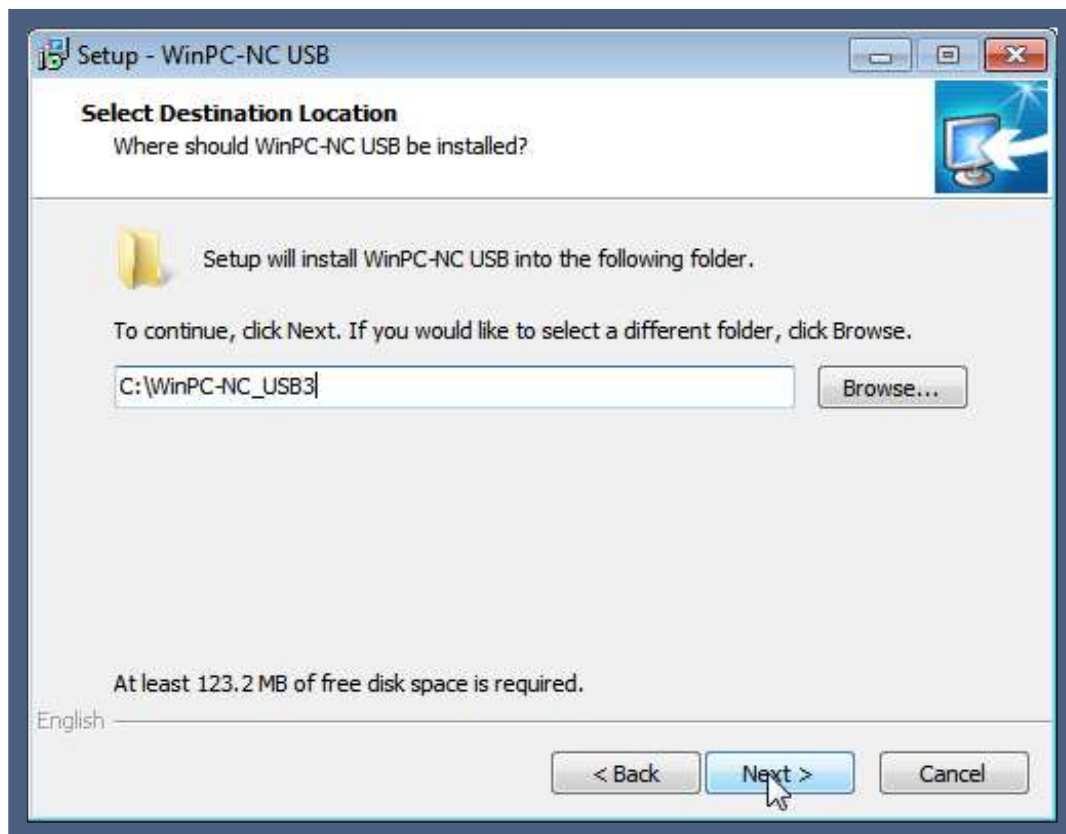


Initial installation of **WinPC-NC** on your computer



Please read this information carefully and accept it by selecting the checkbox I accept the agreement.

After another click on Next > you will get to the dialog for selecting the installation location.



With the button Browse... it is possible to change the location. Select it manually and then confirm the selection with OK.



Note:

***WinPC-NC* requires certain access rights in the directory to save settings and logs. We therefore recommend keeping the suggested target directory in the C:/ drive.**

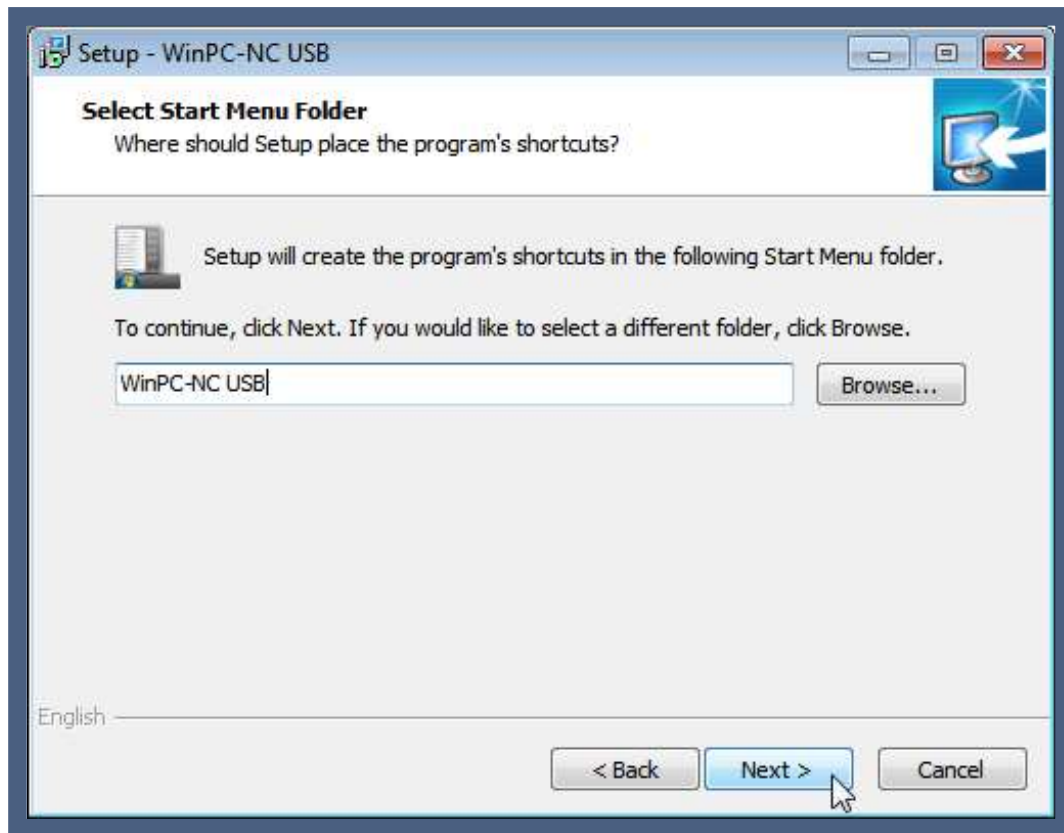
If you select a different directory, you must ensure that *WinPC-NC* has read and write access in the installation directory.

How does it work with *WinPC-NC* ?



Initial installation of **WinPC-NC** on your computer

In the next dialog you will be asked to select the location of the program link and icon.



You can make a personalized selection. To do this, use the button Browse....

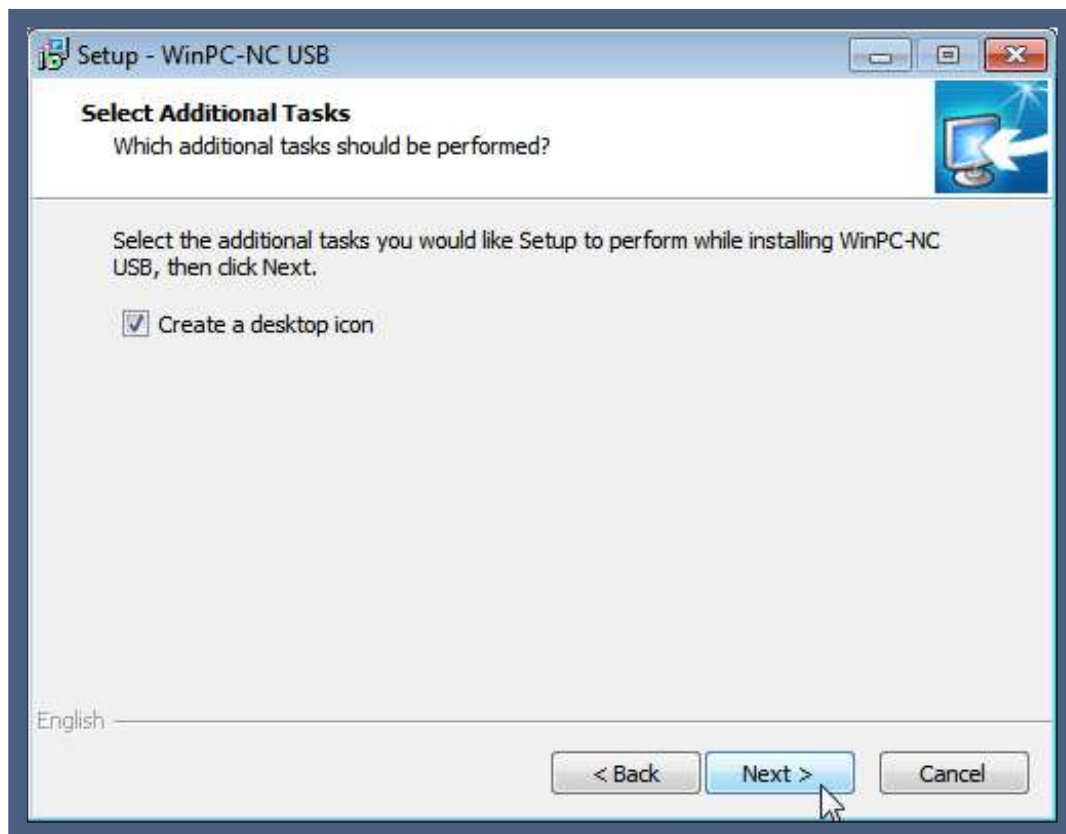
Then confirm your selection by clicking Next >.

Now you will be asked to select whether a program shortcut should be created on the desktop.

How does it work with *WinPC-NC* ?



Initial installation of **WinPC-NC** on your computer



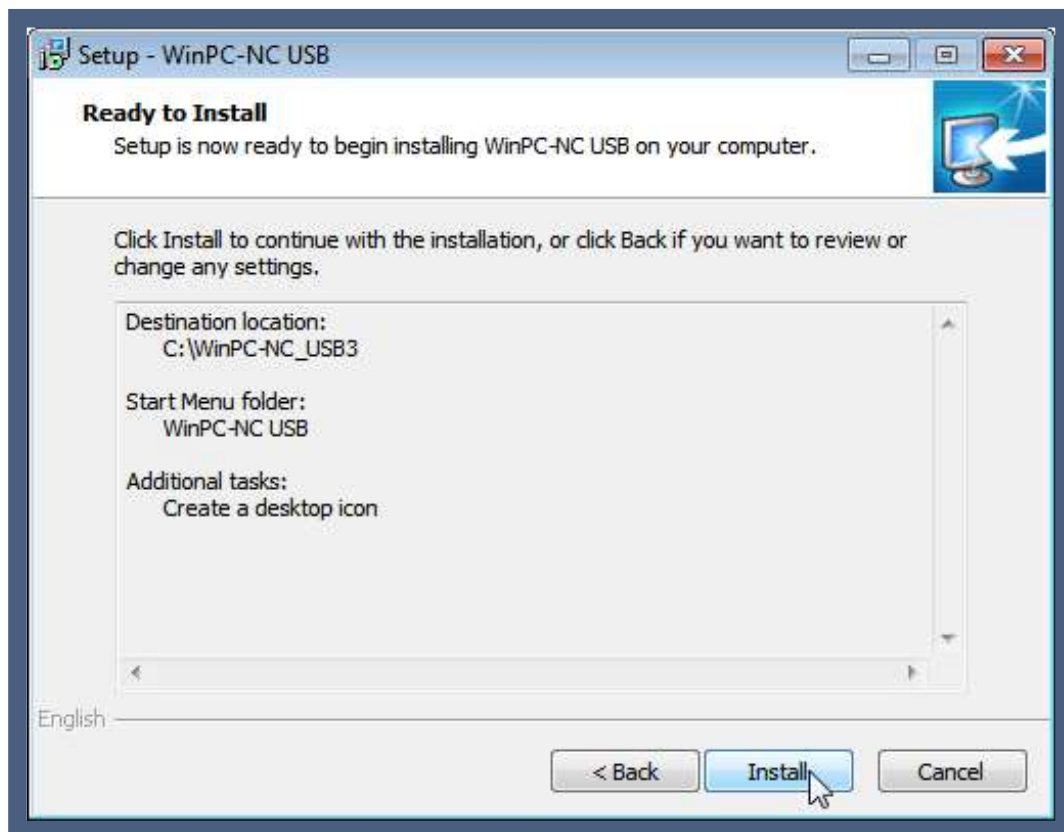
If you do not want this, uncheck the Create a desktop icon checkbox. Afterwards please click on Next >.

In the following dialog, your selected settings will be summarized for you once again.

How does it work with *WinPC-NC* ?



Initial installation of **WinPC-NC** on your computer

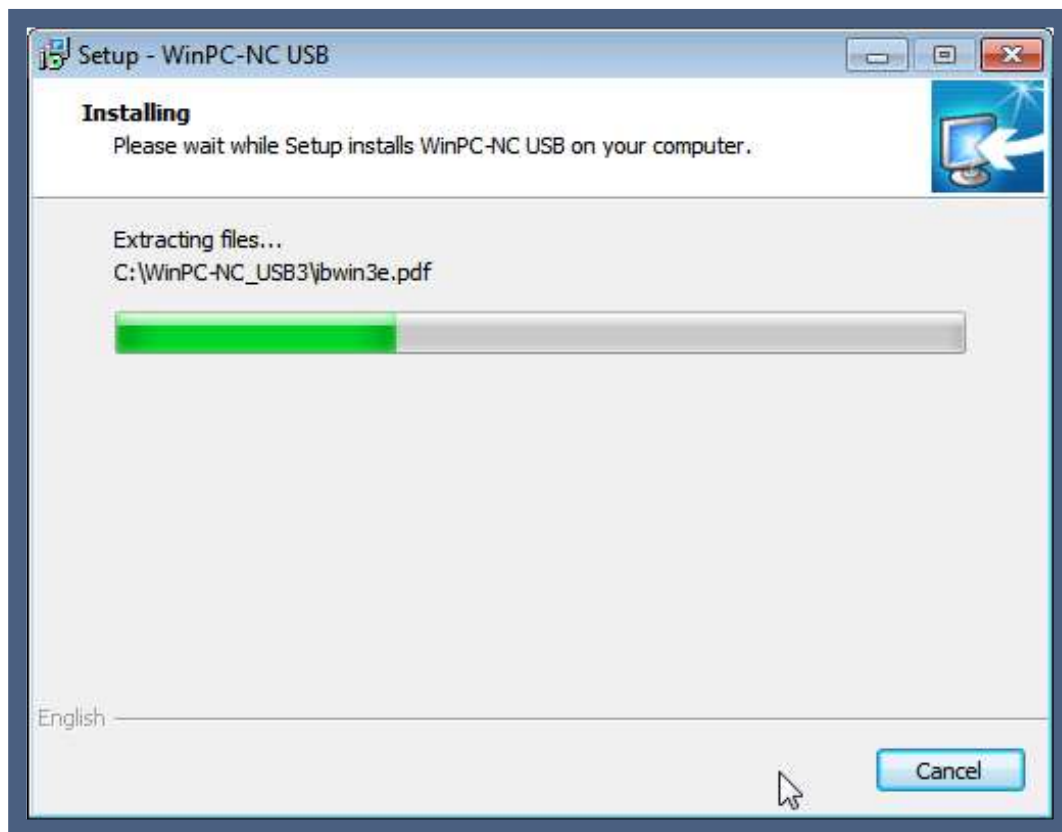


Check your settings again here. Changes are possible at any time with the button < Back.
With a click on Install the installation will start automatically.

How does it work with *WinPC-NC* ?



Initial installation of **WinPC-NC** on your computer



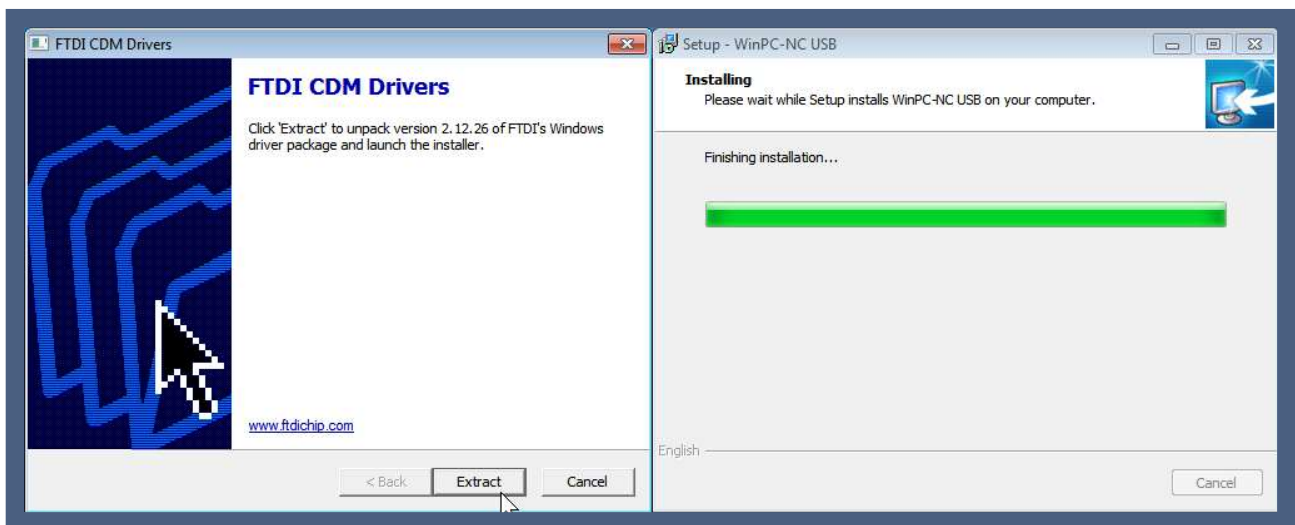
Now the software will be installed on your PC with the settings you made. This may take a short moment.

During the running installation you will be asked to install the drivers. For this purpose, a separate window opens automatically (on the left side of next picture), while the last display window of the **WinPC-NC** installation keeps still open in background.

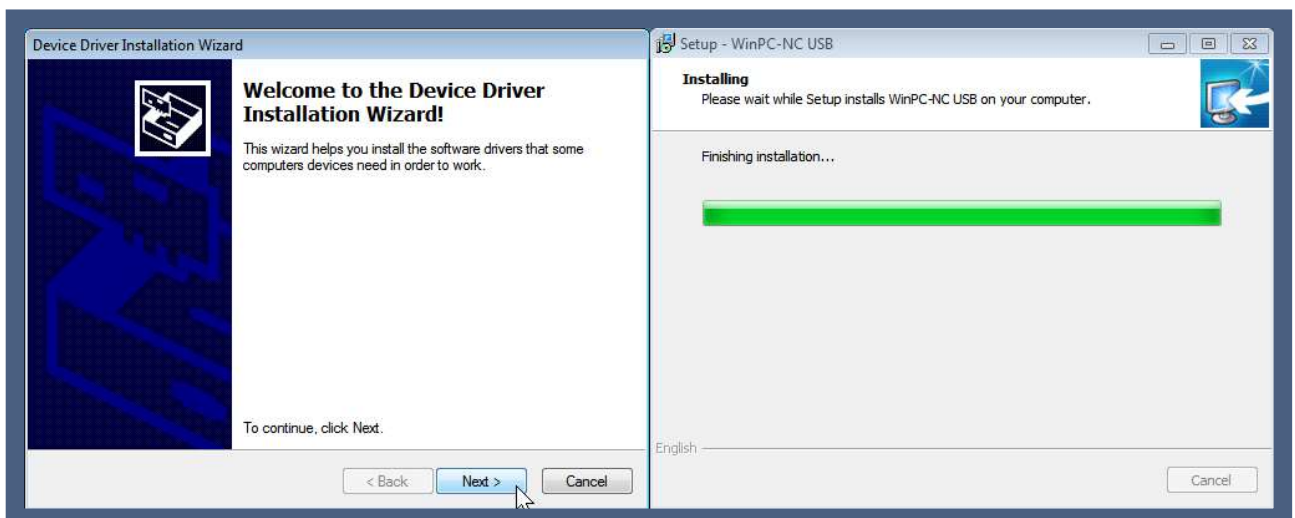
How does it work with *WinPC-NC* ?



Initial installation of *WinPC-NC* on your computer

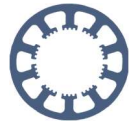


Here again confirm the driver installation by clicking Extract.

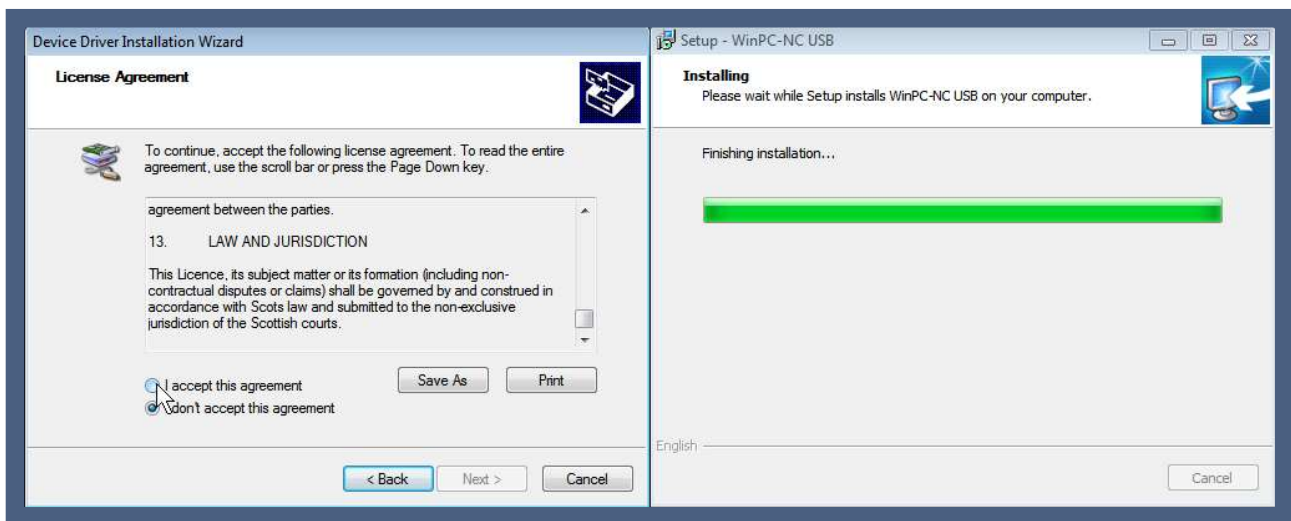


Again, follow the wizard by clicking Next >

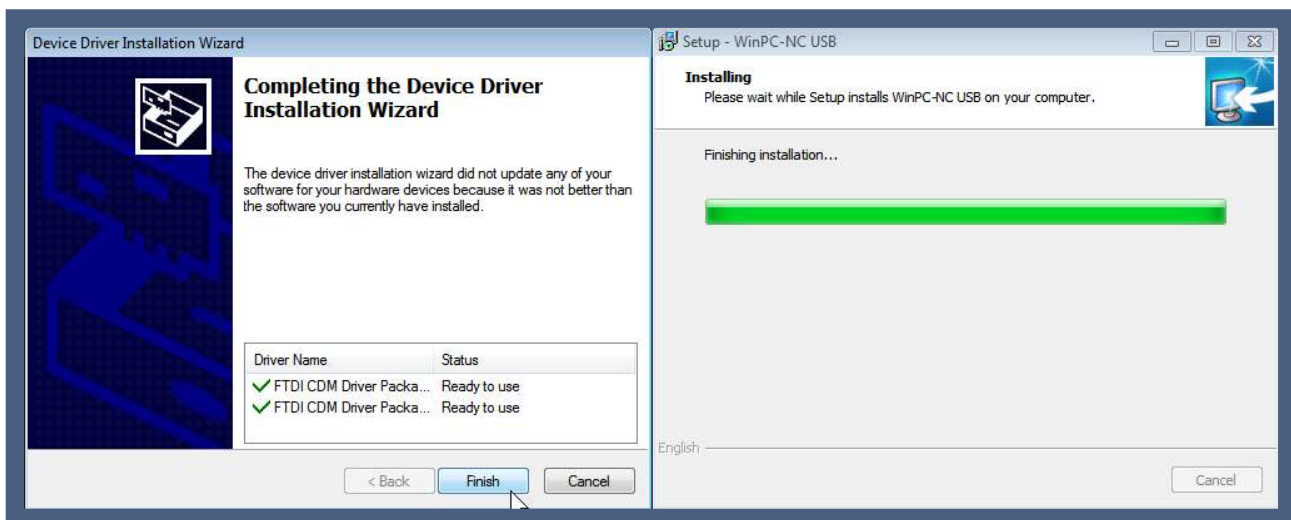
How does it work with *WinPC-NC* ?



Initial installation of *WinPC-NC* on your computer



Please read and accept the license agreement for the driver and confirm with Next >.
After a short waiting time the drivers are copied and you can close the driver installation wizard by clicking Finish.



The installation of your software is now complete.

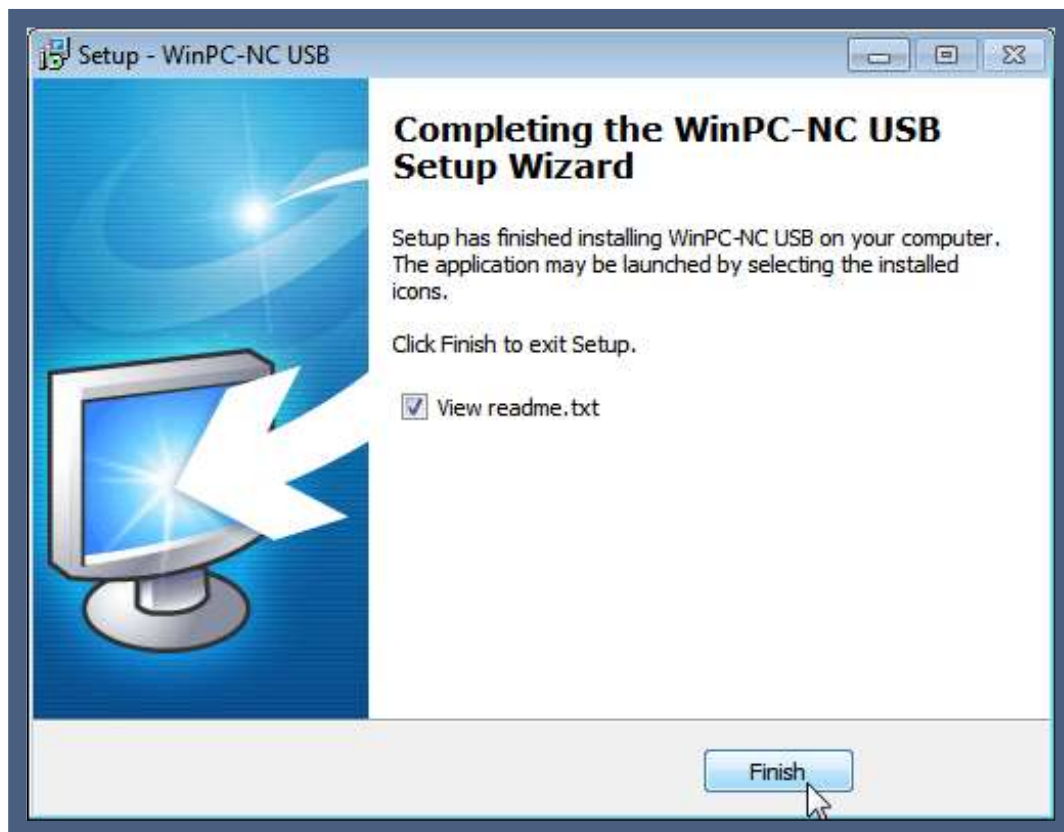
You have the option to select whether you want to read the info file via the View readme.txt checkbox.

This file contains additional information or news about your software and it is recommended to read it.

How does it work with *WinPC-NC* ?



Initial installation of **WinPC-NC** on your computer



Finish the installation by clicking the Finish button.



Note:

If you have received *WinPC-NC* via download link as an e-mail or license card, also carry out the step in the next chapter.



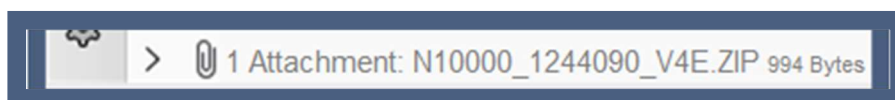
4. License file



Note:

If you have purchased the *WinPC-NC* software on a CD, you can skip the following step.

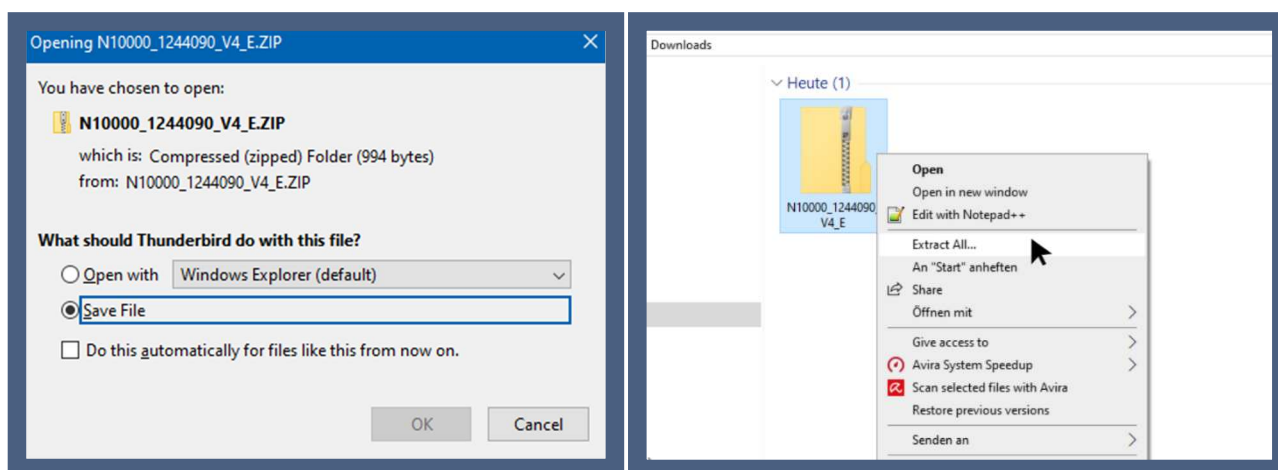
If you received *WinPC-NC* with a license card or ordered an update online - your license was sent to you by e-mail as an attachment in a ZIP folder.



The ZIP folder name usually consists of the first letter of your variant of *WinPC-NC*, your hardware number, your software number and your version.

In some cases, the ZIP folder name can also consist of the name of the license holder.

Save the folder and extract it.

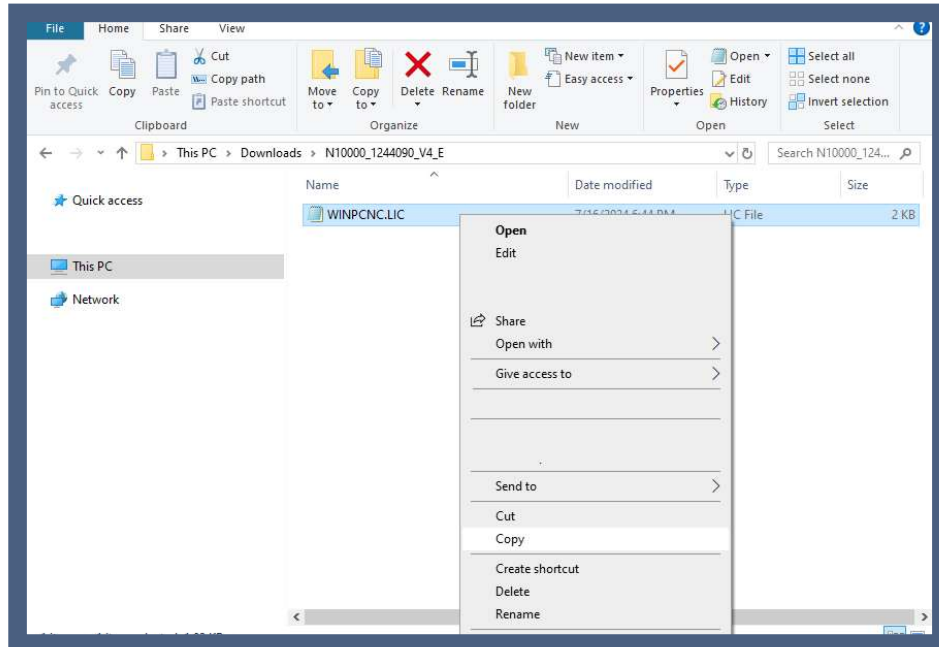


How does it work with *WinPC-NC* ?

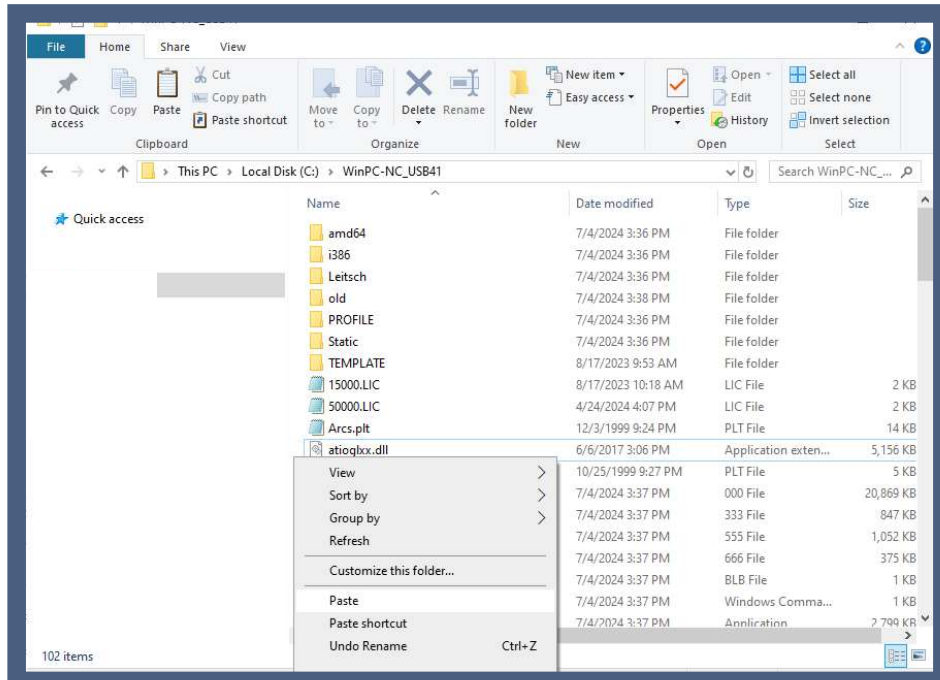


Initial installation of *WinPC-NC* on your computer

Copy the files contained in it and open the *WinPC-NC* installation directory you have just created.



Paste the copied files there.



You must answer Yes to the message whether existing files should be overwritten, then you have installed your personalized license file for your hardware.



5. Connecting the hardware

Connect the USB hardware to a free USB 2.0 or 3.0 port using the cable supplied.

You can connect the network hardware either directly to the computer's network connection or to a compatible switch.

The network hardware also requires a separate power supply. Make sure that the power LED is on.

Further information on this can be found in the network hardware documentation at <https://lewetz.net/red/ncnet>

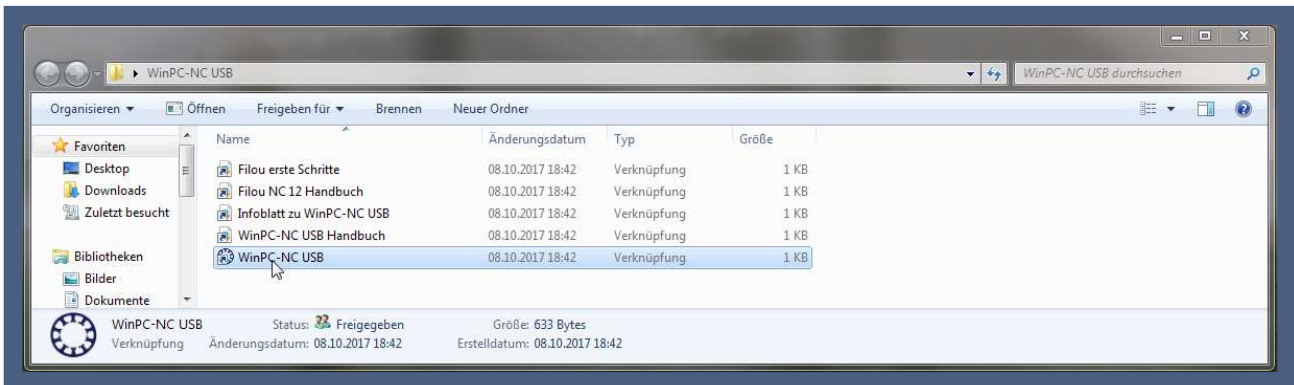
Depending on the interface supplied, *WinPC-NC Professional* can be connected either directly via the serial interface, USB or network.



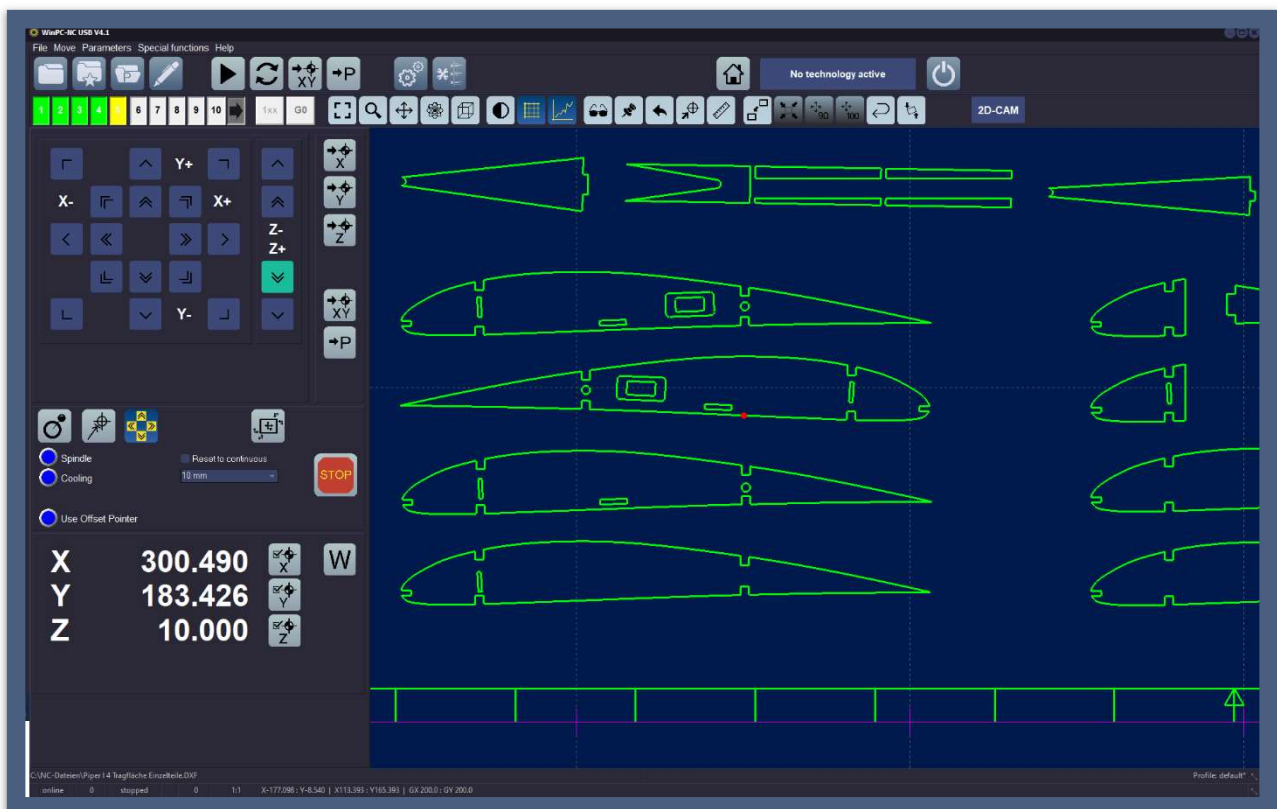
6. Starting *WinPC-NC*

Start *WinPC-NC* for the first time via the shortcut on the desktop or in the Start menu, depending on the location you selected during installation.

In the standard installation, this shortcut is located in the *WinPC-NC USB*, *WinPC-NC Light*, *WinPC-NC NET* or *WinPC-NC Professional* folder on the desktop.



To do this, open the folder and double-click to start the software. The program will now open and you can start working with it. The main screen of *WinPC-NC* with a loaded NC file is shown below:



How does it work with *WinPC-NC* ?

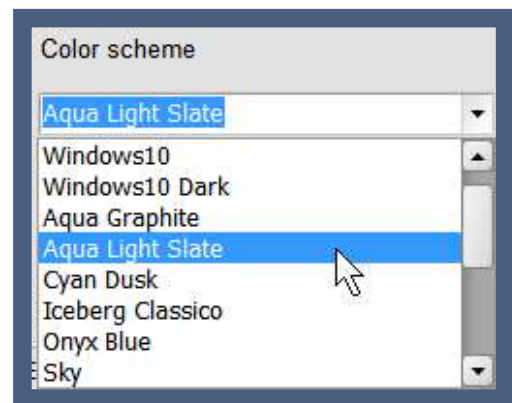
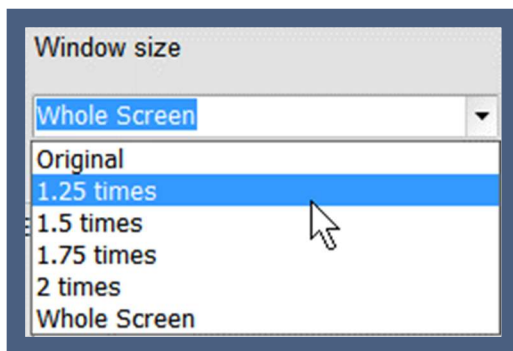


Initial installation of **WinPC-NC** on your computer

To adapt the display of the dialogs, menus and windows to the monitor you are using and the available screen resolution, we recommend that you make two settings right at the begin.

Open the Parameter menu and select Basic settings. Then select the Display/Operation tab and you will see the dialog with display settings.

Under Window size, please select a suitable setting, e.g. 1.25x and confirm with a mouse click. You will immediately see the resulting window size, the size of the text lines and menus and can change this to suit your workstation.



In a second step, you can select a different display color or color combination under Color scheme that you like more or that offers a better display. Please always save any changes you have made by clicking on the Save... button.

You can find further information on operating and configuring your software in the operating manual and in the other How to... instructions.

Operating manual:

<https://lewetz.de/en/service/download>

How to with **WinPC-NC** instructions:

<https://lewetz.de/en/faq/how-to-with-wince-nc>