

Hard- und Software Burkhard Lewetz

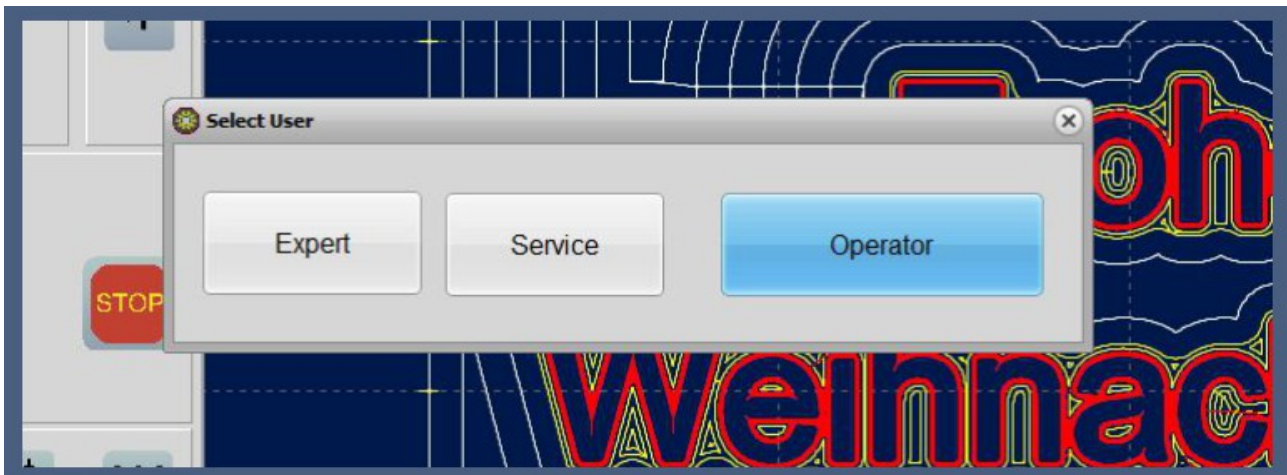
Technical Software Development

How does it work...

...with *WinPC-NC* ?

User administration and password protection

	Light
X	USB
X	Professional



Selection of new user

In version 4.1 from February 2023, *WinPC-NC USB* and *WinPC-NC Professional* can manage password-protected different user profiles with different access privileges.



Table of content

Purpose of a multi-level user administration	2
Activation of the user control.....	3
Displaying and changing users.....	4

Purpose of a multi-level user administration

In an industrial use of control systems it is common to protect machine or job settings against unintentional or unauthorized changes and with a multi-level user administration this requirement can be met.

WinPC-NC distinguishes between three different user profiles with different access privileges :

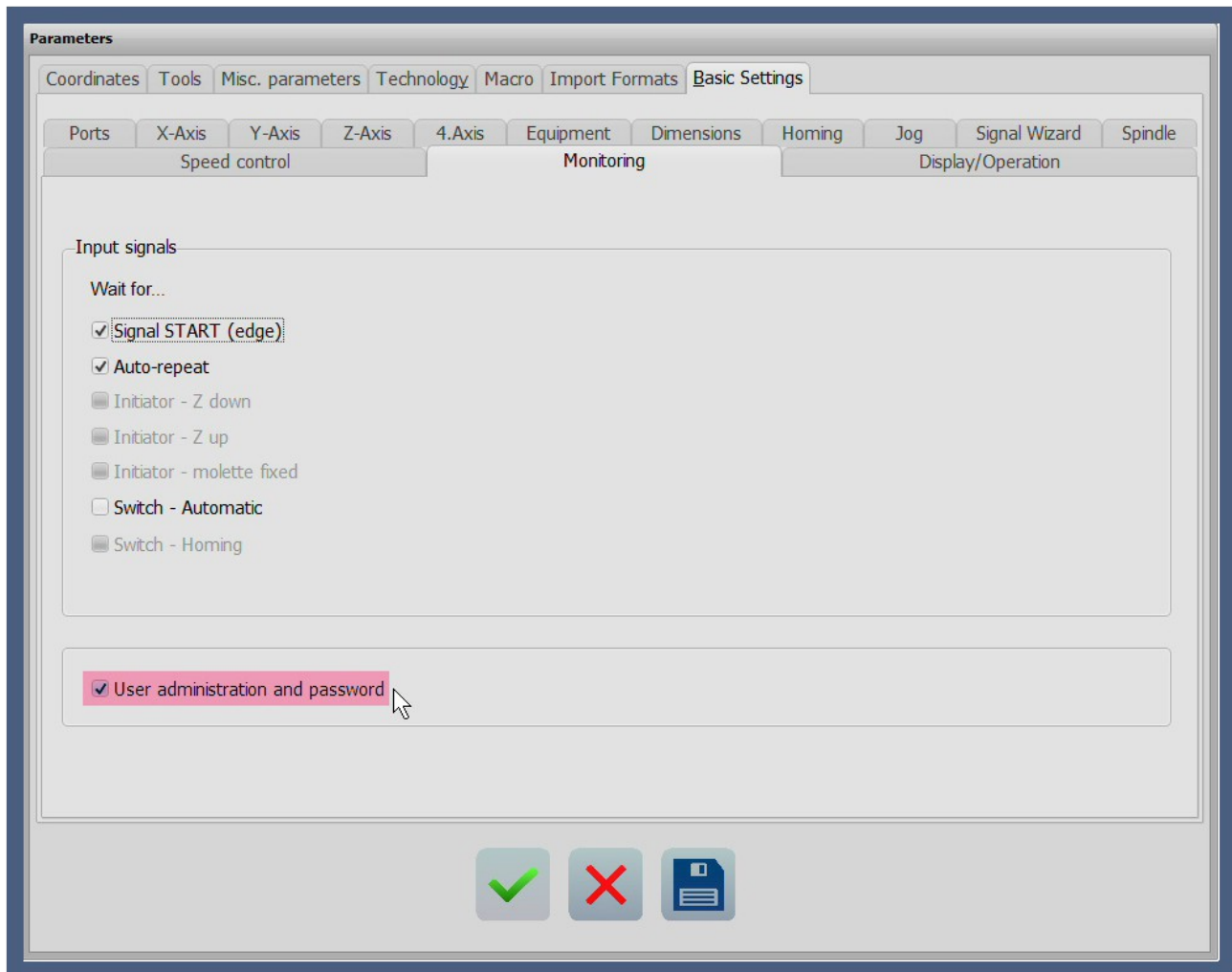
Operator	...can start the machine, perform reference and park runs, change tools and load and start prepared jobs. ...cannot change settings of the machine or the prepared jobs and cannot create new jobs
Expert	...can do everything the operator can do and additionally create new jobs and define or change the corresponding parameters. ...can not change settings of the machine, no macros and no tool magazine positions and no settings for the sensors
Service staff	...can change everything of the other two users and additionally all machine and system settings in WinPC-NC

The user profiles for the *expert* and *service staff* are protected by definable passwords that are encrypted and saved in the system.



Activation of the user control

The user administration is activated in the parameters under *Basic settings-Monitoring* and then another display TAB called *Password* appears under *Misc.Parameters*.



Activation of multi-level user administration

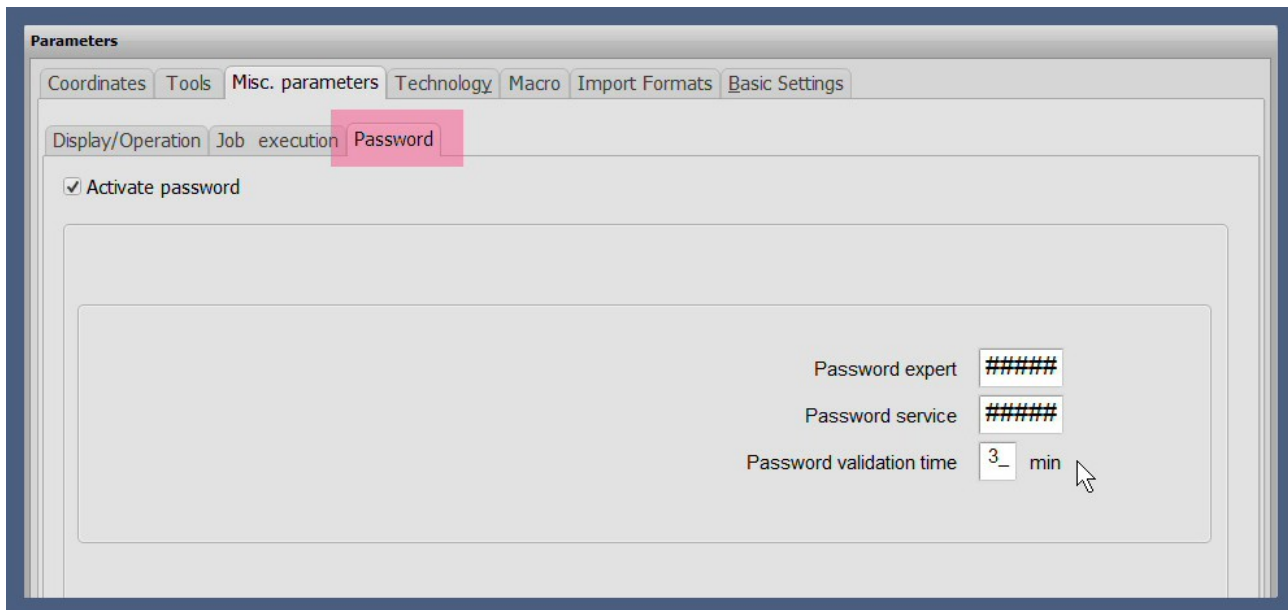
In the password dialog, the password function can be activated, a validity period for a correctly entered password can be defined, and the two passwords for the *Expert* and *Service* employee users can be specified.

The validity period in minutes determines how long the *Expert* and *Service* employee users remain active before automatically returning to the *Operator* user. By defining a validity period, it is no longer possible to accidentally remain in a higher privileged level when the work is done. With a validity period of zero, the selected user remains permanently set.



Note:

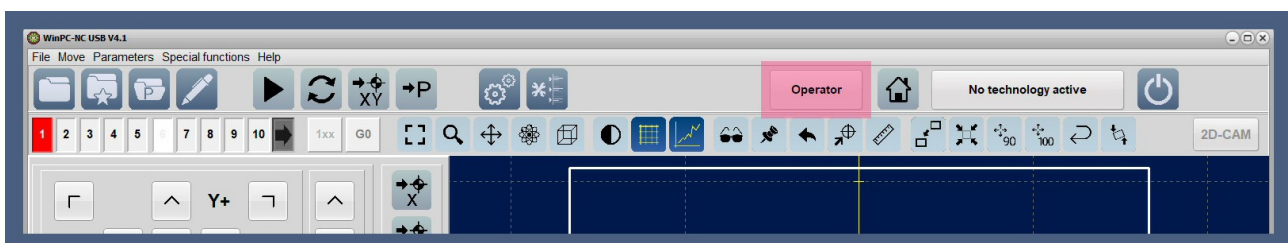
When the passwords are activated for the first time, they are 3333 for the *expert* and 1234 for the *service* employee by default. It is recommended to set these passwords to new and secret values right at the activation.



Parameter dialog for password activation and setting

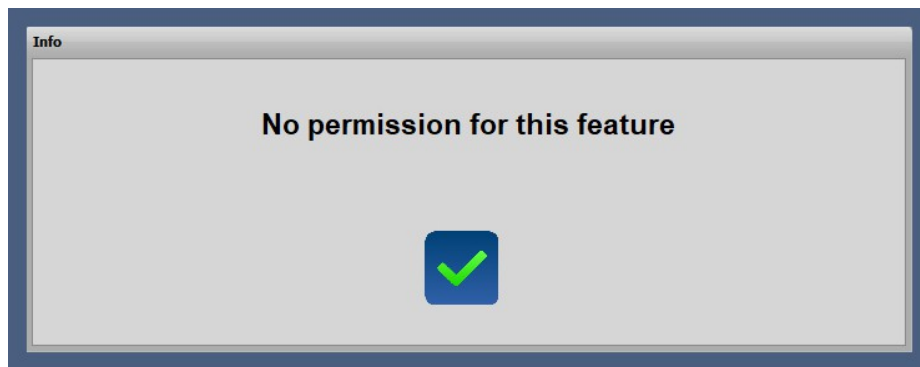
Displaying and changing users

When the user administration is active, the currently selected user is displayed in a new large button in the upper button line.



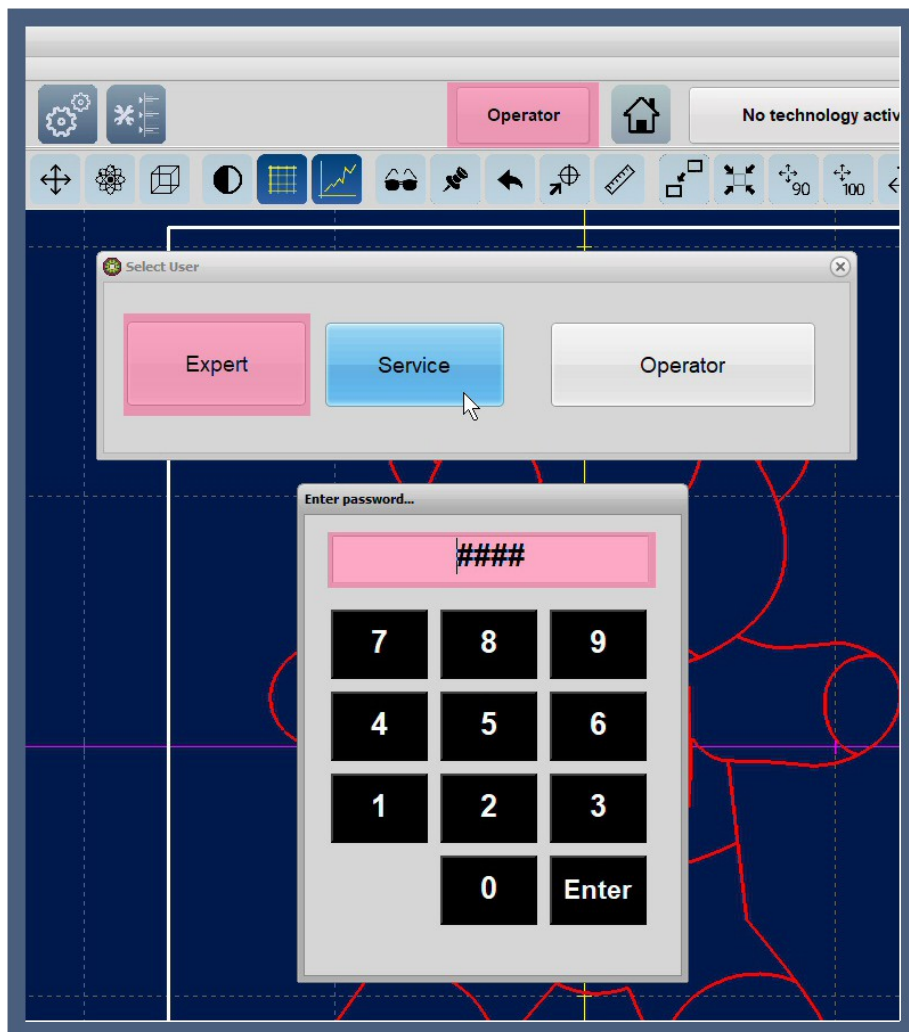
Display of current user

Depending on which user is currently active, only the authorized actions and tasks are available and for all others a corresponding message appears. Inaccessible parameters no longer appear in the dialogs at all.



Warning message at missing privileges

With a simple mouse click in the upper user button a query and an input dialog for the corresponding password appears. Only if the password is entered correctly, the change to the new user takes place. The user *Operator* does not need a password and has the least privileges in handling and operating *WinPC-NC*.



Hidden password input